



YURTBAY
YAPI KİMYASALLARI

PRODUCT CATALOGUE & USER GUIDE

**The Hidden Strength
Within the Building**

Zeki Yurtbay'ın

bize bıraktığı o anlamlı sözle başladı her şey:

“Ya en iyisini yapacaksın, ya hiç yapmayacaksın.”

O cümle büyüdü, milyonlarca adımın yolunu aydınlatan bir ilhama dönüştü.

30 yıl önce attığımız ilk adımda yalnızca seramik üretmiyorduk, aynı zamanda bir hayalin de temelini atıyorduk.

Yıllar geçti, çok şey değişti; ancak inancımız ve hayallerimiz asla değişmedi. 30. yılımızı geride bırakırken, bu başarı hikayesinin gerçek mimarı olan Yurtbay Seramik ailesine sonsuz teşekkürlerimizi sunuyoruz.



It all began with the meaningful words **Zeki Yurtbay** left us:

“Either do it in the best way, or don't do it at all.”

That sentence grew and turned into an inspiration that illuminated the path of millions of steps.

When we took our first step 30 years ago, we weren't just producing ceramics; we were also laying the foundation of a dream. Years have passed, and many things have changed. The only constants have been our faith and our dreams.

As we leave behind our 30th year, we extend our deepest gratitude to the true architect of this success story — the Yurtbay Seramik family.



About **YYK**

Yurtbay Construction Chemicals was established as a part of Yurtbay Ceramic, a pioneer company in its sector that has transformed the reflections of nature into works of art for five decades, to carry Yurtbay's experience, quality concept, and reliability into the construction chemicals sector and to generate a proudly preferred brand offering products of state-of-the-art technology, and started production in 2010.

We believe that everyone should respect people and the environment. Accordingly, we produce innovative construction chemicals by using materials that are more sensitive in terms of human health and the environment. On the other hand, we always act in accordance with the principles of quality, trust, and service, and we prioritize solution-oriented approaches.

Among the factors that distinguish Yurtbay Construction Chemicals is the quality of our products, including ceramic adhesive mortars, which offer high adhesive strength, long durability, and ease of application.

Over time, Yurtbay Construction Chemicals has expanded its world-class product range that touches living spaces from ceramic adhesive mortars and grout options to waterproofing materials, repair mortars, insulation system components, floor preparation products, primers, and maintenance products, and has become a large production center producing more than 150 products. We are a strong company that never compromises on the principle of correct and competitive pricing; we aim to grow and expand into global markets as a solution partner for many prestigious projects, as we have done since the day we were established.



Ceramic Adhesives

1-13



Types Of Grout

14-24



Technical Mortars and
Plasters

25-34



Waterproofing Materials

35-46



Thermal Insulation Materials

47-55



Primers and Additives

56-62



Surface Cleaning and
Maintenance Materials

63-66



Floor Preparation Materials

67-70

CERAMIC ADHESIVES





YURT BAY FIX

CERAMIC TILE ADHESIVE MORTAR

YURT BAY FIX is a cement-based ceramic adhesive mortar offering a standard performance with a reduced slip feature.



C1T

AREAS OF APPLICATION

It is used for horizontal and vertical applications of coating materials such as small and medium-sized floor and wall ceramics, and natural stones, in both indoor and outdoor environments.

EXAMPLES OF APPLICATION

Indoor walls: Cement-based plaster and concrete surfaces
Indoor floors: Cement-based screed floors (provided that the surface has sufficiently set and is dry) and concrete floors.

APPLICATION INFORMATION (23 °C AND 50% R.H.)

Product type	: Powder
Product color	: Gray or White
Mixing ratio	: 5.5 - 6 liters of water for a 25 kg mixture
Pot life	: Max. 3 hours
Application temperature	: Between +5 °C and +35 °C
Open holding time	: 20 minutes [according to TS EN 12004-1]
Time required for usability	: Min. 24 hours [light foot traffic]
Curing time for joint filler	: Min. 24 hours
Time required for complete hardening	: 28 days

SURFACE PREPARATION

The surfaces to which Yurtbay Fix will be applied must be clean and solid. Dust, oil, and materials that prevent adhesion must be cleaned from the surface, and residues of mortar, cement, etc., must be scraped off the surface. Defects on the surface that are deeper than 2 cm must be repaired at least one day before the application.

PREPARATION OF THE MIXTURE

5.5 - 6 liters of clean water is poured into a clean, round-shaped container, and 25 kg of powder product is gradually added and mixed until the mixture becomes homogeneous and contains no lumps [a low-speed mixer should be used for mixing. Fresh mortar should be rest for 5 minutes and remixed before application.

APPLICATION

YURT BAY FIX mortar prepared should be applied to the surface with a steel trowel suitable for the amount of the mixture. The coating material is placed on the surface and stroked with a rubber-tipped mallet to ensure it fits the surface. Tiles should be installed to the surface within 20 minutes. During the application phase, wide expansion joint gaps should be left for every 50m² area. The prepared mortar should be used within 3 hours.

APPLICATION CONDITIONS

- The temperature of the ambient air and the application surface should be between 5 and 35°C.
- It should not be applied on surfaces that have frozen, are melting, or are prone to a risk of freezing.
- The mixture should not be applied when the surface is extremely hot, or when the weather is very sunny, or extremely windy.

WARNINGS AND RECOMMENDATIONS

- If the material starts to crust during the open holding time, it should be remixed before application.
- It is not recommended to rewet the material which has started to crust.
- Foreign materials should never be added.
- It is recommended for ceramics with a maximum size of 33x33 cm.
- A primer base should be applied to reduce water absorption before making applications on surfaces coated with plaster or similar materials with high water absorption capacity.

CONSUMPTION

Consumption amount for 1 m².

Application	Comb Size	Consumption Amount [Kg/m ²]
Single-side adhesion	6x6x6 mm	3-4 kg
Single-side adhesion	8x8x8 mm	4-5 kg

Not: The given consumption amounts are approximate values and may vary depending on the smoothness of the application surface and the thickness of the application.

SHELF LIFE

It can be used within 12 months from the date of production if stored in dry, moisture-free environments and in its original packaging. The package should be tightly closed when not in use. *These values are obtained as a result of laboratory tests in compliance with standards. Values may vary in different application environments.

BAG	PALLET		
BAG WEIGHT / kg	QUANTITY / BAG	GROSS WEIGHT/kg	DIMENSIONS/cm
25	64	1600	110x110x100

*The specified weights do not include the pallet.





YURT BAY SUPER FIX

CERAMIC TILE ADHESIVE MORTAR

YURT BAY SUPER FIX is a cement-based ceramic adhesive mortar offering a standard performance with a reduced slip feature and extended open holding time.



CITE

AREAS OF APPLICATION

It is used for horizontal and vertical applications of coating materials such as small and medium-sized floor and wall ceramics, and natural stones, in both indoor and outdoor environments.

EXAMPLES OF APPLICATION

Indoor walls: Cement-based plaster and concrete surfaces
Indoor floors: Cement-based screed floors (provided that the surface has sufficiently set and is dry) and concrete floors
Outdoor: Cement-based screed and concrete flooring.

APPLICATION INFORMATION [23 °C AND 50% R.H.]

Product type	: Powder
Product color	: Gray or White
Mixing ratio	: 5.75 - 6.25 liters of water for a 25 kg mixture
Pot life	: Max. 3 hours
Application temperature	: Between +5 °C and +35 °C
Open holding time	: 30 minutes [according to TS EN 12004-1]
Time required for usability	: Min. 24 hours [light foot traffic]
Curing time for joint filler	: Min. 24 hours
Time required for complete hardening	: 28 days

SURFACE PREPARATION

The surfaces to which Yurtbay Super Fix will be applied must be clean and solid. Dust, oil, and materials that prevent adhesion must be cleaned from the surface, and residues of mortar, cement, etc, must be scraped off the surface. Defects on the surface that are deeper than 2 cm must be repaired at least one day before the application.

PREPARATION OF THE MIXTURE

5.75 - 6.25 liters of clean water is poured into a clean, round-shaped container, and 25 kg of powder product is gradually added and mixed until the mixture becomes homogeneous and contains no lumps. A low-speed mixer should be used for mixing. Fresh mortar should be rest for 5 minutes and remixed before application.

APPLICATION

YURT BAY SUPER FIX mortar prepared should be applied to the surface with a steel trowel suitable for the amount of the mixture. The coating material is placed on the surface and stroked with a rubber-tipped mallet to ensure it fits the surface. When installing tiles larger than 40x40 cm, especially in areas with heavy pedestrian traffic, mortar should be applied both on the floor and the tile. Tiles should be adhered to the surface within 30 minutes. During the application phase, wide expansion joint gaps should be left for every 50 m² area. The prepared mortar should be used within 3 hours.

APPLICATION CONDITIONS

- The temperature of the ambient air and the application surface should be between 5 and 35°C.
- It should not be applied on surfaces that have frozen, are melting, or are prone to a risk of freezing.
- The mixture should not be applied when the surface is extremely hot, or when the weather is very sunny, or extremely windy.

WARNINGS AND RECOMMENDATIONS

- If the material starts to crust during the open holding time, it should be remixed before application.
- It is not recommended to rewet the material which has started to crust.
- Foreign materials should never be added.
- It is recommended for ceramics with a maximum size of 33x33 cm.
- A primer base should be applied to reduce water absorption before making applications on surfaces coated with plaster or similar materials with high water absorption capacity.

CONSUMPTION

Consumption amount for 1 m².

Application	Comb Size	Consumption Amount [Kg/m ²]
Single-side adhesion	6x6x6 mm	3-4 kg
Single-side adhesion	8x8x8 mm	4-5 kg

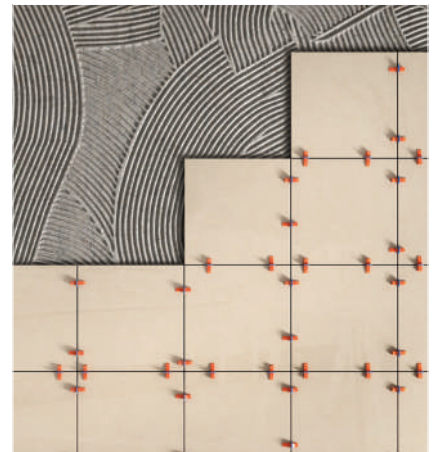
Note: The given consumption amounts are approximate values and may vary depending on the smoothness of the application surface and the thickness of the application.

SHELF LIFE

It can be used within 12 months from the date of production if stored in dry, moisture-free environments and in its original packaging. The package should be tightly closed when not in use.
*These values are obtained as a result of laboratory tests in compliance with standards. Values may vary in different application environments.

BAG	PALLET		
BAG WEIGHT / kg	QUANTITY/BAG	GROSS WEIGHT/kg	DIMENSIONS/cm
25	64	1600	110x110x100

* The specified weight amounts exclude the pallet.





YURT BAY MASTERFLEX

GRANITE AND CERAMIC TILE ADHESIVE MORTAR

YURT BAY MASTERFLEX is a cement-based ceramic adhesive mortar offering a high performance with a reduced slip feature.



C2T

TS EN 12004-1

AREAS OF APPLICATION

It is used for horizontal and vertical applications of coating materials such as medium and large-sized floor and wall ceramics, and natural stone, travertine, marble, granite, porcelain ceramic, decorative brick in both indoor and outdoor environments.

EXAMPLES OF APPLICATION

Indoor and Outdoor Floor-Wall;

- Cement-based plaster
- Concrete [Surface on which Yurtbay Exposed Concrete Primer is applied]
- Old ceramic covering [Surface on which Yurtbay Filling Primer is applied]

APPLICATION INFORMATION [23 °C AND 50% R.H.]

Product type	: Powder
Product color	: Gray or White
Mixing ratio	: 5.75 - 6.25 liters of water for a 25 kg mixture
Pot life	: Max. 3 hours
Application temperature	: Between +5 °C and +35 °C
Open holding time	: 30 minutes [according to TS EN 12004-1]
Time required for usability	: Min. 24 hours [Light pedestrian traffic]

Curing time for joint filler	: Min. 24 hours
Time required for complete hardening	: 28 days

SURFACE PREPARATION

The surfaces to which Yurtbay Masterflex will be applied must be clean and solid. Dust, oil, and materials that prevent adhesion must be cleaned from the surface, and residues of mortar, cement, etc., must be scraped off the surface. Defects on the surface that are deeper than 2 cm must be repaired at least one day before the application.

PREPARATION OF THE MIXTURE

5.75 - 6.25 liters of clean water is poured into a clean, round-shaped container, and 25 kg of powder product is gradually added and mixed until the mixture becomes homogeneous and contains no lumps. A low-speed mixer should be used for mixing. Fresh mortar should be rest for 5 minutes and remixed before application.

APPLICATION

YURT BAY MASTERFLEX mortar prepared should be applied to the surface with a steel trowel suitable for the amount of the mixture. The coating material is placed on the surface and stroked with a rubber-tipped mallet to ensure it fits the surface. For tiles larger than 40x40 cm, especially in areas with heavy pedestrian traffic, mortar should be applied both on the floor and the tile. Tiles should be adhered to the surface within 20 minutes. During the application phase, wide expansion joint gaps should be left for every 50 m2 area. The prepared mortar should be used within 3 hours.

APPLICATION CONDITIONS

- The temperature of the ambient air and the application surface should be between 5 and 35 °C.
- It should not be applied on surfaces that have frozen, are melting, or are prone to a risk of freezing.
- The mixture should not be applied when the surface is extremely hot, or when the weather is very sunny, or extremely windy.

WARNINGS AND RECOMMENDATIONS

- If the material starts to crust during the open holding time, it should be remixed before application.
- It is not recommended to rewet the material which has started to crust.
- Foreign materials should never be added.
- A primer base should be applied to reduce water absorption before making applications on surfaces coated with plaster or similar materials with high water absorption capacity.

CONSUMPTION

Consumption amount for 1 m2.

Application	Comb Size	Consumption Amount [Kg/m2]
Single-side adhesion	6x6x6 mm	3-4 kg
Single-side adhesion	8x8x8 mm	4-5 kg

Not: The given consumption amounts are approximate values and may vary depending on the smoothness of the application surface and the thickness of the application.

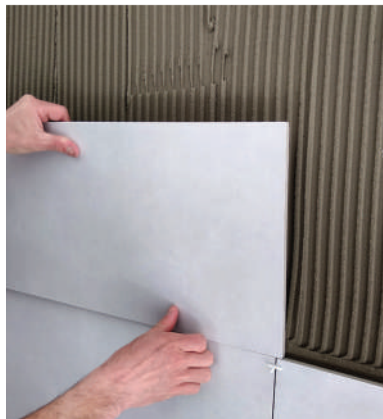
SHELF LIFE

It can be used within 12 months from the date of production if stored in dry, moisture-free environments and in its original packaging. The package should be tightly closed when not in use.

*These values are obtained as a result of laboratory tests in compliance with standards. Values may vary in different application environments.

BAG	PALLET		
BAG WEIGHT / kg	QUANTITY/BAG	GROSS WEIGHT/kg	DIMENSIONS/cm
25	64	1600	110x110x100

* The specified weight amounts exclude the pallet.





YURT BAY ULTRA FLEX

GRANITE AND MARBLE ADHESIVE MORTAR

YURT BAY ULTRA FLEX is a cement-based ceramic adhesive mortar offering a high performance with a reduced slip feature and extended open holding time.



C2TE

AREAS OF APPLICATION

It is used for horizontal and vertical applications of coating materials such as medium and large-sized floor and wall ceramics, and natural stone, travertine, marble, granite, porcelain ceramic, decorative brick in both indoor and outdoor environments.

EXAMPLES OF APPLICATION

Indoor and Outdoor Floor-Wall;

- Cement-based plaster
- Concrete [Surface on which Yurtbay Exposed Concrete Primer is applied]
- Old ceramic covering [Surface on which Yurtbay Filling Primer is applied]

APPLICATION INFORMATION [23 °C AND 50% R.H.]

Product type : Powder
Product color : Gray or White
Mixing ratio : 5.75 - 6.25 liters of water for a 25 kg mixture

Pot life : Max. 3 hours
Application temperature : Between +5 °C and +35 °C
Open holding time : 30 minutes [according to TS EN 12004-1]

Time required for usability : Min. 24 hours [Light pedestrian traffic]
Curing time for joint filler : Min. 24 hours
Time required for complete hardening : 28 days

SURFACE PREPARATION

The surfaces to which Yurtbay Ultra Flex will be applied must be clean and solid. Dust, oil, and materials that prevent adhesion must be cleaned from the surface, and residues of mortar, cement, etc., must be scraped off the surface. Defects on the surface that are deeper than 2 cm must be repaired at least one day before the application.

PREPARATION OF THE MIXTURE

5.75 - 6.25 liters of clean water is poured into a clean, round-shaped container, and 25 kg of powder product is gradually added and mixed until the mixture becomes homogeneous and contains no lumps. A low-speed mixer should be used for mixing. Fresh mortar should be rest for 5 minutes and remixed before application.

APPLICATION

YURT BAY ULTRA FLEX mortar prepared should be applied to the surface with a steel trowel suitable for the amount of the mixture.

The coating material is placed on the surface and stroked with a rubber-tipped mallet to ensure it fits the surface. For tiles larger than 40x40 cm, especially in areas with heavy pedestrian traffic, mortar should be applied both on the floor and the tile. Tiles should be installed to the surface within 30 minutes. During the application phase, wide expansion joint gaps should be left for every 50 m2 area. The prepared mortar should be used within 3 hours.

APPLICATION CONDITIONS

The temperature of the ambient air and the application surface should be between 5 °C and 35°C.

- It should not be applied on surfaces that have frozen, are melting, or are prone to a risk of freezing.
- The mixture should not be applied when the surface is extremely hot, or when the weather is very sunny, or extremely windy.

WARNINGS AND RECOMMENDATIONS

- If the material starts to crust during the open holding time, it should be remixed before application.
- It is not recommended to rewet the material which has started to crust.
- Foreign materials should never be added.
- A primer base should be applied to reduce water absorption before making applications on surfaces coated with plaster or similar materials with high water absorption capacity.

CONSUMPTION

Consumption amount for 1 m2.

Application	Comb Size	Consumption Amount [Kg/m2]
Single-side adhesion	6x6x6 mm	3-4 kg
Single-side adhesion	8x8x8 mm	4-5 kg

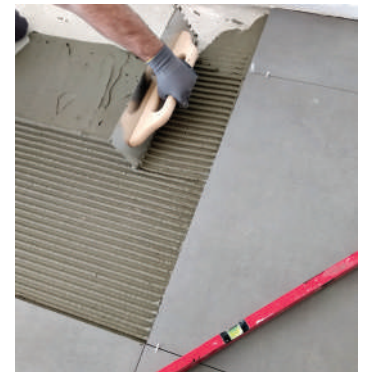
Note: The given consumption amounts are approximate values and may vary depending on the smoothness of the application surface and the thickness of the application.

SHELF LIFE

It can be used within 12 months from the date of production if stored in dry, moisture-free environments and in its original packaging. The package should be tightly closed when not in use. *These values are obtained as a result of laboratory tests in compliance with standards. Values may vary in different application environments.

BAG	PALLET		
BAG WEIGHT / kg	QUANTITY / BAG	GROSS WEIGHT/kg	DIMENSIONS/cm
25	64	1600	110x110x100

*The specified weights do not include the pallet.





YURT BAY MiX

READY-TO-USE CERAMIC ADHESIVE MORTAR

YURT BAY MIX is an acrylic emulsion-based, ready-to-use ceramic adhesive mortar offering a high performance with a reduced slip feature.



D2TE

AREAS OF APPLICATION

It is used for horizontal and vertical applications of coating materials such as floor and wall ceramics, and natural stones, in indoor environments.

EXAMPLES OF APPLICATION

Indoor Floor-Wall;

- Cement-based plaster [on which Yurtbay Acrylic Primer is applied]
- Concrete [on which Yurtbay Acrylic Primer is applied]
- Ceramic adhering over old ceramics
- Glassy surfaces. Wooden surfaces
- Gypsum-based surfaces [on which Yurtbay Acrylic Primer is applied]

APPLICATION INFORMATION [23 °C AND 50% R.H.]

Product type : Paste
Product color : White
Mixing ratio : The product is ready for use.
Application temperature : Between +5 °C and +35 °C
Open holding time : 30 minutes [according to TS EN 12004-1]

Curing time for joint filler : Min. 24 hours
Time required for complete hardening : 28 days

SURFACE PREPARATION

The surfaces to which Yurtbay Mix will be applied must be clean and solid. Dust, oil, and materials that prevent adhesion must be cleaned from the surface, and residues of mortar, cement, etc., must be scraped off the surface. Defects on the surface that are deeper than 2 cm must be repaired at least one day before the application.

APPLICATION

Ready-to-use YURT BAY MIX should be applied to the surface with a steel trowel suitable for the amount of the mixture. The coating material is placed on the surface and stroked with a rubber-tipped mallet to ensure it fits the surface. When installing tiles larger than 20x20 cm to the surface, adhesive mortar should also be filled into the gaps under the tiles. Tiles must be installed to the surface within 30 minutes. During the application phase, wide expansion joint gaps should be left for every 50m² area. The prepared mortar should be used within 30 minutes.

APPLICATION CONDITIONS

- The temperature of the ambient air and the application surface should be between 5 and 35°C.
- It should not be applied on surfaces that have frozen, are melting, or are prone to a risk of freezing.
- The mixture should not be applied when the surface is extremely hot, or when the weather is very sunny, or extremely windy.

WARNINGS AND RECOMMENDATIONS

- If the material starts to crust during the open holding time, it should be remixed before application.

It is not recommended to rewet the material which has started to crust. Foreign materials should never be added.

A primer base should be applied to reduce water absorption before making applications on surfaces coated with plaster or similar materials with high water absorption capacity.

CONSUMPTION

Consumption amount for 1 m².

Application	Comb Size	Consumption Amount [Kg/m ²]
Single-side adhesion	6x6x6 mm	3-4 kg
Single-side adhesion	8x8x8 mm	4-5 kg

Note: The given consumption amounts are approximate values and may vary depending on the smoothness of the application surface and the thickness of application

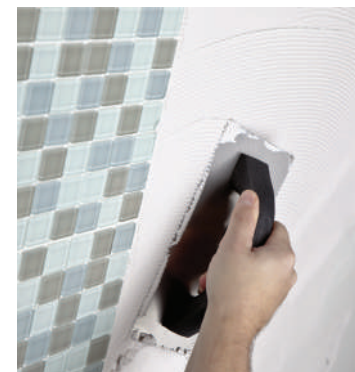
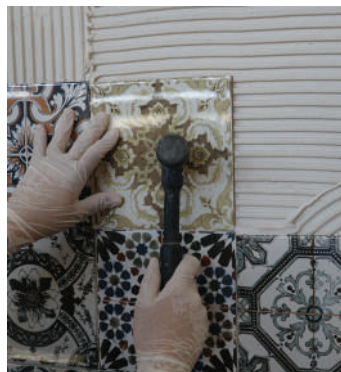
SHELF LIFE

It can be used within 12 months from the date of production if stored in dry, moisture-free environments and in its original packaging.

The package should be tightly closed when not in use. *These values are obtained as a result of laboratory tests in compliance with standards. Values may vary in different application environments.

BUCKET		PALLET	
BUCKET WEIGHT / lt	QUANTITY / BUCKET	GROSS WEIGHT / lt	BOYUT / cm
5	40	200	110x110x50
15	24	360	110x110x70

* The specified weight amounts exclude the pallet.





YURTBAY FLEXIBLE PLUS S1

FLEXIBLE ADHESIVE MORTAR

YURTBAY FLEXIBLE PLUS S1 is a flexible, cement-based ceramic adhesive mortar offering a high adhesive strength with a reduced slip feature and extended open holding time.



C2TE S1

AREAS OF APPLICATION

It is used for horizontal and vertical applications of coating materials such as medium and large-sized floor and wall ceramics, natural stone, marble, granite, porcelain ceramic, decorative brick in both indoor and outdoor environments with floor heating systems.

EXAMPLES OF APPLICATION

Indoor Floor-Wall;

- Cement-based plaster
- Concrete [Surface on which Yurtbay Exposed Concrete Primer is applied]
- Old ceramic covering [Surface on which Yurtbay Filling Primer is applied]

APPLICATION INFORMATION [23 °C AND 50% R.H.]

Product type : Powder
Product color : Gray or White
Mixing ratio : 5.75 - 6.25 liters of water for a 25 kg mixture

Pot life : Max. 3 hours
Application temperature : Between +5 °C and +35 °C
Open holding time : 30 minutes [according to TS EN 12004-1]

Time required for usability : Min. 24 hours [Light pedestrian traffic]
Curing time for joint filler : Min. 24 hours
Time required for complete hardening : 28 days

SURFACE PREPARATION

The surfaces to which Yurtbay Flexible Plus S1 will be applied must be clean and solid. Dust, oil, and materials that prevent adhesion must be cleaned from the surface, and residues of mortar, cement, etc., must be scraped off the surface. Defects on the surface that are deeper than 2 cm must be repaired at least one day before the application.

PREPARATION OF THE MIXTURE

6 - 6.5 liters of clean water is poured into a clean, round-shaped container, and 25 kg of powder product is gradually added and mixed until the mixture becomes homogeneous and contains no lumps. A low-speed mixer should be used for mixing. Fresh mortar should be rest for 5 minutes and remixed before application.

APPLICATION

YURTBAY FLEXIBLE PLUS S1 mortar prepared should be applied to the surface with a steel trowel suitable for the amount of the mixture. The coating material is placed on the surface and stroked with a rubber-tipped mallet to ensure it fits the surface. When installing tiles larger than 40x40 cm, especially in areas with heavy pedestrian traffic, mortar should be applied both on the floor and the tile. Tiles should be installed to the surface within 30 minutes. During the application phase, wide expansion joint gaps should be left for every 50 m2 area. The prepared mortar should be used within 3 hours.

APPLICATION CONDITIONS

- The temperature of the ambient air and the application surface should be between 5 and 35°C.
- It should not be applied on surfaces that have frozen, are melting, or are prone to a risk of freezing.
- The mixture should not be applied when the surface is extremely hot, or when the weather is very sunny, or extremely windy.

WARNINGS AND RECOMMENDATIONS

- If the material starts to crust during the open holding time, it should be remixed before application.
- It is not recommended to rewet the material which has started to crust.
- Foreign materials should never be added.
- A primer base should be applied to reduce water absorption before making applications on surfaces coated with plaster or similar materials with high water absorption capacity.

CONSUMPTION

Consumption amount for 1 m2.

Application	Comb Size	Consumption Amount [Kg/m2]
Single-side adhesion	6x6x6 mm	3-4 kg
Single-side adhesion	8x8x8 mm	4-5 kg

Note: The given consumption amounts are approximate values and may vary depending on the smoothness of the application surface and the thickness of application

SHELF LIFE

It can be used within 12 months from the date of production if stored in dry, moisture-free environments and in its original packaging.

The package should be tightly closed when not in use. *These values are obtained as a result of laboratory tests in compliance with standards. Values may vary in different application environments.

BAG	PALLET		
BAG WEIGHT / kg	QUANTITY / BAG	GROSS WEIGHT/kg	DIMENSIONS/cm
25	64	1600	110x110x100

*The specified weights do not include the pallet.





YURTBAY FLEXIBLE FAST

FLEXIBLE ADHESIVE MORTAR

FLEXIBLE FAST is a cement-based ceramic adhesive mortar offering a high performance with a reduced slip feature.



C2FT S1

AREAS OF APPLICATION

It is preferred for installing coating materials such as medium and large-sized floor and wall ceramics, and natural stone, travertine, marble, granite, porcelain ceramic, decorative brick, and for horizontal and vertical applications in both indoor and outdoor environments, especially on surfaces that need to be opened to pedestrian traffic in a short time and in floor applications that will be exposed to heavy pedestrian traffic.

EXAMPLES OF APPLICATION

Indoor Floor-Wall;

- Cement-based plaster
- Concrete [Surface on which Yurtbay Exposed Concrete Primer is applied]
- Old ceramic covering [Surface on which Yurtbay Filling Primer is applied]

APPLICATION INFORMATION (23 °C AND 50% R.H.)

Product type	: Powder
Product color	: Gray
Mixing ratio	: 6 - 6.5 liters of water for a 25 kg mixture
Pot life	: Max. 30 minutes
Application temperature	: Between +5 °C and +35 °C
Open holding time	: 10 minutes [according to TS EN 12004-1]
Time required for usability	: Min. 6 hours [Light pedestrian traffic]
Curing time for joint filler	: Min. 4 hours
Time required for complete hardening	: 28 days

SURFACE PREPARATION

The surfaces to which Yurtbay Flexible Fast will be applied must be clean and solid. Dust, oil, and materials that prevent adhesion must be cleaned from the surface, and residues of mortar, cement, etc., must be scraped off the surface. Defects on the surface that are deeper than 2 cm must be repaired at least 2-3 days before the application.

PREPARATION OF THE MIXTURE

6 - 6.5 liters of clean water is poured into a clean, round-shaped container, and 25 kg of powder product is gradually added and mixed until the mixture becomes homogeneous and contains no lumps. A low-speed mixer should be used for mixing. Fresh mortar should be rest for 5 minutes and remixed before application. The product should be prepared in small amounts that can be used in a short period, considering the application speed.

APPLICATION

FLEXIBLE FAST mortar prepared should be applied to the surface with a steel trowel suitable for the amount of the mixture. The coating material is placed on the surface and stroked with a rubber-tipped mallet to ensure it fits the surface. When installing tiles larger than 40x40 cm, especially in areas with heavy pedestrian

traffic, mortar should be applied both on the floor and the tile.

Since the product sets quickly, it should not be spread over a wide area, and tiles should be adhered to the surface immediately. Since the product sets quickly, it should not be spread over a wide area, and tiles should be adhered to the surface immediately.

APPLICATION CONDITIONS

- The temperature of the ambient air and the application surface should be between 5 °C and 35°C.
- It should not be applied on surfaces that have frozen, are melting, or are prone to a risk of freezing.
- The mixture should not be applied when the surface is extremely hot, or when the weather is very sunny, or extremely windy.
- Since the product hardens quickly, the application should be made considering the working time.

WARNINGS AND RECOMMENDATIONS

- Since YURTBAY FLEXIBLE FAST sets quickly, one should take care to avoid a film formation on the surface after application. In case of film formation, the surface should be re-troweled before installation process.
- If the material starts to crust during the open holding time, it should be remixed before application
- It is not recommended to rewet the material which has started to crust.
- Foreign materials should never be added.
- A primer base should be applied to reduce water absorption before making applications on surfaces coated with plaster or similar materials with high water absorption capacity.

CONSUMPTION

- Consumption amount for 1 m2.

Application	Comb Size	Consumption Amount [Kg/m2]
Single-side adhesion	6x6x6 mm	3-4 kg
Single-side adhesion	8x8x8 mm	4-5 kg

Note: The given consumption amounts are approximate values and may vary depending on the smoothness of the application surface and the thickness of application

SHELF LIFE

It can be used within 12 months from the date of production if stored in dry, moisture-free environments and in its original packaging. The package should be tightly closed when not in use.

*These values are obtained as a result of laboratory tests in compliance with standards. Values may vary in different application environments.

BAG	PALLET		
BAG WEIGHT / kg	QUANTITY / BAG	GROSS WEIGHT/kg	DIMENSIONS/cm
25	64	1600	110x110x100

*The specified weights do not include the pallet.





YURTBAY FLEXIBLE PLUS S2

FLEXIBLE ADHESIVE MORTAR

YURTBAY FLEXIBLE PLUS S2 is a cement- and polymer emulsion-based, two-component adhesive mortar offering a high adhesive strength with a reduced slip feature and extended working time, and resistance to temperature changes, water, and frost.



C2TE S2

AREAS OF APPLICATION

It is used for horizontal and vertical applications of coating materials such as medium and large-sized floor and wall ceramics, and natural stone, travertine, marble, granite, porcelain ceramic, decorative brick in both indoor and outdoor environments.

EXAMPLES OF APPLICATION

Indoor and Outdoor Floor-Wall;

- Cement-based plaster
- Concrete [Surface on which Yurtbay Exposed Concrete Primer is applied]
- Old ceramic covering [Surface on which Yurtbay Filling Primer is applied]

APPLICATION INFORMATION (23 °C AND 50% R.H.)

Product type	: Powder and liquid
Product color	: The powder component is gray, the liquid component is white
Mixing ratio	: 6 kg of liquid component for a 25 kg mixture
Pot life	: Max. 3 hours
Application temperature	: Between +5 °C and +35 °C
Open holding time	: 30 minutes [according to TS EN 12004-1]
Time required for usability	: Min. 24 hours [Light pedestrian traffic]
Curing time for joint filler	: Min. 24 hours
Time required for complete hardening	: 28 days

SURFACE PREPARATION

The surfaces to which Yurtbay Flexible Plus S2 will be applied must be clean and solid. Dust, oil, and materials that prevent adhesion must be cleaned from the surface, and residues of mortar, cement, etc., must be scraped off the surface. Defects on the surface that are deeper than 2 cm must be repaired at least one day before the application.

PREPARATION OF THE MIXTURE

6 kg of liquid product is poured into a clean, round-shaped container, and 25 kg of powder product is gradually added and mixed until the mixture becomes homogeneous and contains no lumps. A low-speed mixer should be used for mixing. Fresh mortar should be rest for 5 minutes and remixed before application.

APPLICATION

YURTBAY FLEXIBLE PLUS S2 mortar prepared should be applied to the surface with a steel trowel suitable for the amount of the mixture. The coating material is placed on the surface and stroked with a rubber-tipped mallet to ensure it fits the surface. For tiles larger than 40x40 cm, especially in areas with heavy pedestrian

traffic, mortar should be applied both on the floor and the tile. Tiles should be adhered to the surface within 30 minutes. During the application phase, wide expansion joint gaps should be left for every 50 m2 area. The prepared mortar should be used within 3 hours.

APPLICATION CONDITIONS

- The temperature of the ambient air and the application surface should be between 5 °C and 35°C.
- It should not be applied on surfaces that have frozen, are melting, or are prone to a risk of freezing.
- The mixture should not be applied when the surface is extremely hot, or when the weather is very sunny, or extremely windy.

WARNINGS AND RECOMMENDATIONS

- If the material starts to crust during the open holding time, it should be remixed before application.
- It is not recommended to rewet the material which has started to crust.
- Foreign materials should never be added.
- A primer base should be applied to reduce water absorption before making applications on surfaces coated with plaster or similar materials with high water absorption capacity.

CONSUMPTION

Consumption amount for 1 m2.

Application	Comb Size	Consumption Amount [Kg/m2]
Single-side adhesion	6x6x6 mm	3-4 kg
Single-side adhesion	8x8x8 mm	4-5 kg

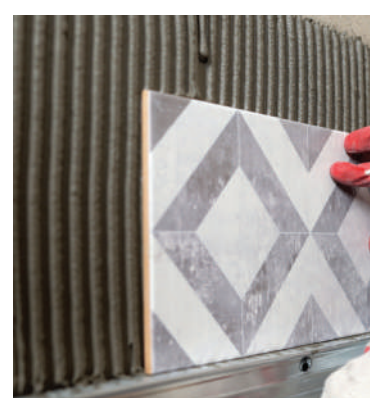
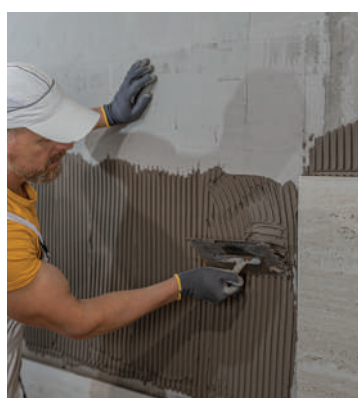
Note: The given consumption amounts are approximate values and may vary depending on the smoothness of the application surface and the thickness of application

SHELF LIFE

It can be used within 12 months from the date of production if stored in dry, moisture-free environments and in its original packaging. The package should be tightly closed when not in use. *These values are obtained as a result of laboratory tests in compliance with standards. Values may vary in different application environments.

BAG / DRUM	PALET		
BAG / DRUM WEIGHT / KG	QUANTITY / BUCKET	GROSS WEIGHT / kg	DIMENSIONS / cm
POWDER COMPONENT 25	40	1000	110x110x55
LIQUID COMPONENT 6	40	240	110x110x45

*The specified weights do not include the pallet.





YURT BAY RAPIDFIX

QUICK SETTING ADHESIVE MORTAR

YURT BAY RAPID FIX is a cement-based, quick setting ceramic adhesive mortar offering a reduced slip feature.



C1FT

AREAS OF APPLICATION

It is used for horizontal and vertical applications of coating materials such as medium and large-sized floor and wall ceramics, and natural stone, travertine, marble, granite, porcelain ceramic, decorative brick in both indoor and outdoor environments. It is preferred especially for floor applications that need to be opened to pedestrian traffic in a short time and will be exposed to heavy pedestrian traffic.

EXAMPLES OF APPLICATION

Indoor and Outdoor Floor-Wall;

- Cement-based plaster
- Concrete [Surface on which Yurtbay Exposed Concrete Primer is applied]
- Old ceramic covering [Surface on which Yurtbay Filling Primer is applied]

APPLICATION INFORMATION (23 °C AND 50% R.H.)

Product type	: Powder
Product color	: Gray
Mixing ratio	: 6 - 6.5 liters of water for a 25 kg mixture
Pot life	: Max. 30 minutes
Application temperature	: Between +5 °C and +35 °C
Open holding time	: 10 minutes [according to TS EN 12004-1]
Time required for usability	: Min. 6 hours [Light pedestrian traffic]
Curing time for joint filler	: Min. 4 hours
Time required for complete hardening	: 28 days

SURFACE PREPARATION

The surfaces to which Yurtbay Rapidfix will be applied must be clean and solid. Dust, oil, and materials that prevent adhesion must be cleaned from the surface, and residues of mortar, cement, etc., must be scraped off the surface. Defects on the surface that are deeper than 2 cm must be repaired at least one day before the application.

PREPARATION OF THE MIXTURE

5.5 - 6 liters of clean water is poured into a clean, round-shaped container, and 25 kg of powder product is gradually added and mixed until the mixture becomes homogeneous and contains no lumps. A low-speed mixer should be used for mixing. Fresh mortar should be rest for 5 minutes and remixed before application. The product should be prepared in small amounts that can be used in a short period, considering the application speed.

APPLICATION

YURT BAY RAPIDFIX mortar prepared should be applied to the surface with a steel trowel suitable for the amount of the mixture. The coating material is placed on the surface and stroked with a rubber-tipped mallet to ensure it fits the surface. When installing

tiles larger than 40x40 cm, especially in areas with heavy pedestrian traffic, mortar should be applied both on the floor and the tile. Since the product sets quickly, it should not be spread over a wide area, and tiles should be adhered to the surface immediately. During the application phase, wide expansion joint gaps should be left for every 50 m2 area.

APPLICATION CONDITIONS

- The temperature of the ambient air and the application surface should be between 5 °C and 35°C.
- It should not be applied on surfaces that have frozen, are melting, or are prone to a risk of freezing.
- The mixture should not be applied when the surface is extremely hot, or when the weather is very sunny, or extremely windy.
- Since the product hardens quickly, the application should be made considering the working time.

WARNINGS AND RECOMMENDATIONS

- Since YURT BAY RAPIDFIX sets quickly, one should take care to avoid a film formation on the surface after application. In case of film formation, the surface should be re-troweled before installation process.
- The surface should be cleaned with a damp sponge immediately after application before installing the coating material.
- It is not recommended to rewet the material which has started to crust.
- Foreign materials should never be added.
- A primer base should be applied to reduce water absorption before making applications on surfaces coated with plaster or similar materials with high water absorption capacity.

CONSUMPTION

Consumption amount for 1 m2.

Application	Comb Size	Consumption Amount [Kg/m2]
Single-side adhesion	6x6x6 mm	3-4 kg
Single-side adhesion	8x8x8 mm	4-5 kg

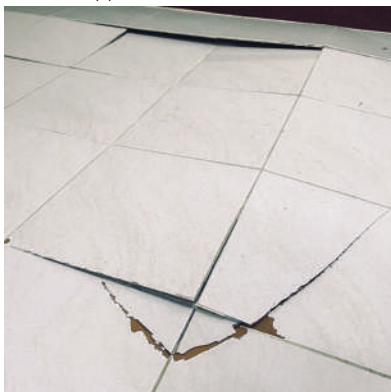
Note: The given consumption amounts are approximate values and may vary depending on the smoothness of the application surface and the thickness of application

SHELF LIFE

It can be used within 6 months from the date of production if stored in dry, moisture-free environments and in its original packaging. The package should be tightly closed when not in use.

BAG	PALLET		
BAG WEIGHT / kg	QUANTITY / BAG	GROSS WEIGHT/kg	DIMENSIONS/cm
25	64	1600	110x110x100

*The specified weights do not include the pallet.





YURTBAY HAVUZYAP FLEX

CERAMIC TILE ADHESIVE MORTAR

YURTBAY HAVUZYAP FLEX is a very flexible, cement-based adhesive mortar developed for pool applications, offering a high adhesive strength with a reduced slip feature and extended working time, and resistance to temperature changes, water, and frost.



C2TE S2

AREAS OF APPLICATION

It is used for horizontal and vertical applications of coating materials such as medium and large-sized floor and wall ceramics, and natural stone, travertine, marble, granite, porcelain ceramic, decorative brick in both indoor and outdoor environments.

EXAMPLES OF APPLICATION

Indoor and Outdoor Floor-Wall;

- Cement-based plaster
- Concrete [Surface on which Yurtbay Exposed Concrete Primer is applied]
- Old ceramic covering [Surface on which Yurtbay Filling Primer is applied]

APPLICATION INFORMATION (23 °C AND 50% R.H.)

Product type	: Powder
Product color	: Gray or white
Mixing ratio	: 6 - 6.5 liters of water for a 25 kg mixture
Pot life	: Max. 3 hours
Application temperature	: Between +5 °C and +35 °C
Open holding time	: 30 minutes [according to TS EN 12004-1]
Time required for usability	: Min. 24 hours [Light pedestrian traffic]
Curing time for joint filler	: Min. 24 hours
Time required for complete hardening	: 28 days

SURFACE PREPARATION

The surfaces to which Yurtbay Havuzyap flex will be applied must be clean and solid. Dust, oil, and materials that prevent adhesion must be cleaned from the surface, and residues of mortar, cement, etc., must be scraped off the surface. Defects on the surface are deeper than 2 cm must be repaired at least one day before the application.

PREPARATION OF THE MIXTURE

6 - 6.5 liters of clean water is poured into a clean, round-shaped container, and 25 kg of powder product is gradually added and mixed until the mixture becomes homogeneous and contains no lumps. A low-speed mixer should be used for mixing. Fresh mortar should be rest for 5 minutes and remixed before application.

APPLICATION

YURTBAY HAVUZYAP FLEX mortar prepared should be applied to the surface with a steel trowel suitable for the amount of the mixture. The coating material is placed on the surface and stroked with a rubber-tipped mallet to ensure it fits the surface. For tiles larger than 40x40 cm, especially in areas with heavy pedestrian traffic, mortar should be applied both on the floor and the tile. Tiles should be adhered to the surface within 30 minutes. During the application phase, wide expansion joint gaps should be left for every 50 m2 area. The prepared mortar should be used within 3 hours.

APPLICATION CONDITIONS

- The temperature of the ambient air and the application surface should be between 5 and 35 °C.
- It should not be applied on surfaces that have frozen, are melting, or are prone to a risk of freezing.
- The mixture should not be applied when the surface is extremely hot, or when the weather is very sunny, or extremely windy.

WARNINGS AND RECOMMENDATIONS

- If the material starts to crust during the open holding time, it should be remixed before application.
- It is not recommended to rewet the material which has started to crust.
- Foreign materials should never be added.
- A primer base should be applied to reduce water absorption before making applications on surfaces coated with plaster or similar materials with high water absorption capacity.

CONSUMPTION

Consumption amount for 1 m2.

Application	Comb Size	Consumption Amount [Kg/m2]
Single-side adhesion	6x6x6 mm	3-4 kg
Single-side adhesion	8x8x8 mm	4-5 kg

SHELF LIFE

It can be used within 12 months from the date of production if stored in dry, moisture-free environments and in its original packaging. The package should be tightly closed when not in use.

BAG	PALLET		
BAG WEIGHT / kg	QUANTITY / BAG	GROSS WEIGHT/kg	DIMENSIONS/cm
25	64	1600	110x110x100

*The specified weights do not include the pallet.



FREQUENTLY ASKED QUESTIONS

CERAMIC ADHESIVES

What is a ceramic adhesive?

A ceramic adhesive is a type of binder used to firmly join ceramic materials. Ceramic adhesives are commonly used in various applications, such as adhering ceramic tiles to walls or floors, installing ceramic sinks or countertops, and repairing ceramic bowls or plates.

Ceramic adhesives consist of various components depending on the properties of the ceramic materials and the type of surface to which the ceramic materials are to be bonded. These components are usually polymer-based and are specifically formulated to provide good adhesion on ceramic surfaces.

What should be considered when choosing the appropriate ceramic adhesive?

When choosing the adhesive, it is important to choose an adhesive suitable for the type of ceramic. Different ceramic materials may require different adhesive characteristics, so one should consider the type of ceramic material. Moreover, adhesive's water resistance is another important factor. For applications in wet areas such as bathrooms or kitchens, choosing a water-resistant adhesive for ceramics ensures long-lasting bonding. Moreover, the quick-drying capability of the adhesive is also important. A quick-drying adhesive saves time and allows workers to complete their jobs faster. The adhesion strength of the adhesive should also be considered.

Is it appropriate to use the same type of adhesive for different types of ceramics?

Using the same type of ceramic adhesive for different sizes and surfaces can result in problems. Therefore, it is important to choose the right ceramic adhesive. We recommend you to review our Yurtbay Construction Chemicals product catalog to find the correct product.

How long does it take for a ceramic adhesive to fully cure?

Each ceramic adhesive has a different curing time. It is generally between 24 to 72 hours, but we recommend to review the technical data sheets of the relevant products.

How long can a ceramic adhesive be used after the package is opened?

In a dry ambient with a maximum relative humidity of 50%, the shelf life of adhesives is around 12 months if kept in their original packaging. The remaining product in an opened package should be kept tightly closed and consumed in a short time.

Is it possible to install new ceramic tiles over existing ones?

It is possible, but the relevant area should be clean, solid, and free from any permanent dirt. Yurtbay Filling Primer is applied on the old ceramic tiles to prepare a suitable surface. Then, you can review our Yurtbay Construction Chemicals product catalog to find the correct product.

FREQUENTLY ASKED QUESTIONS

CERAMIC ADHESIVES

What is the ideal thickness of the adhesive layer for ceramic applications?

The recommended thickness is between 3-6 mm, but the ideal thickness may vary from one surface to another. In addition to adhering the coating material used, the coating bed provided by ceramic adhesives has different functions: It avoids problems caused by movement variances between the coating and the surface, shields the surface from the effects of water, and helps to eliminate defects on the surface levelling. Using appropriate trowel during adhesive applications helps to ensure the necessary adhesive layer and allows for leveling of the coating material. It is essential that the coating material is fully adhered in wet areas, outdoor spaces, and all floor applications. It is necessary to apply pressure by rotating/sliding the coating material during installation to ensure full contact between the adhesive and the coating material. During installation, it is recommended to randomly lift any coating material to check whether the desired contact has been achieved. It is important to choose an appropriate notched trowel and application method [Single/double-side adhesion] according to the size of the coating material.

Is it possible to apply ceramic adhesive to painted walls?

Of course, it can be applied; but only after the painted surface is properly prepared for this application. The first step in ceramic application on painted surfaces is surface preparation. When applying ceramic on a painted surface, it is important to clean the surface and achieve a smooth base in advance. Removing dirt, dust, or grease residues ensures that the ceramics adhere properly.

Ceramic materials should be adhered by using appropriate ceramic adhesives. The type of adhesive may vary depending on the type of ceramic and the place of application. Therefore, it is important to choose the correct adhesive.

TYPES OF GROUT





YURT BAY FLEX FUGA

ELASTIC SILICONE-ADDED JOINT FILLER

YURT BAY FLEX FUGA is a cement-based, silicon-added joint filler material offering high performance with water-repellent properties, and is suitable for joint gaps of 2 to 10 mm.


CG2WA

AREAS OF APPLICATION

It is used for filling joint gaps of 2 to 10 mm between coating materials such as floor and wall ceramics, marble, and natural stone.

EXAMPLES OF APPLICATION

- Indoor walls and floors
- Outdoor walls and floors

APPLICATION INFORMATION (23 °C AND 50% R.H.)

Product type	: Powder
Product color	: Colored powder (15 colors)
Mixing ratio	: 6.2 - 6.6 liters of water for a 20 kg mixture
Pot life	: Max. 1.5 hours
Application temperature	: Between +5 °C and +35 °C
Time required for usability	: Min. 24 hours [Light pedestrian traffic]
Time required for complete hardening	: 28 days

PRODUCT PERFORMANCE CHARACTERISTICS

-Wear resistance	: ≤ 1000 mm ³
-Flexural strength after dry storage	: ≥ 2,5 N/mm ²
-Compressive strength after dry storage	: ≥ 15 N/mm ²
-Water absorption after 30 minutes	: ≤ 2g
-Water absorption after 240 minutes	: ≤ 5g
-Shrinkage	: ≤ 3mm/m

*These values are obtained as a result of laboratory tests in compliance with standards. Values may vary in different application environments.

SURFACE PREPARATION

The joint spacings of tile surfaces must be clean, dry, empty, and free from dust, and any oil stains or materials that prevent adhesion must be removed from the surface. To ensure better adhesion of the joint filler to the tile surfaces, the joint spacings should be moistened with a damp sponge.

PREPARATION OF THE MIXTURE

6.2 - 6.6 liters of clean water is poured into a clean, round-shaped container, and 20 kg of powder product is gradually added and mixed until the mixture becomes homogeneous and contains no lumps.

A low-speed mixer should be used for mixing. Fresh mortar should be rest for 5 minutes and remixed before application.

APPLICATION

The prepared YURT BAY FLEX FUGA joint filler should be pressed diagonally into the joint spacings with a rubber or rubber-based trowel. Joints should be cleaned diagonally with a damp sponge as soon as the joint surface starts to dry. The joint filler is wiped and polished with a dry cloth once it has fully hardened. The prepared mortar should be used within 1.5 hours.

APPLICATION CONDITIONS

- The temperature of the ambient air and the application surface should be between 5 and 35 °C.
- It should not be applied on surfaces that have frozen, are melting, or are prone to a risk of freezing.
- The mixture should not be applied when the surface is extremely hot, or when the weather is very sunny, or extremely windy.

WARNINGS AND RECOMMENDATIONS

- Once the product is mixed, it should be used within the pot life.
- During application, products whose pot life has expired should definitely not be used.
- After application, one should take care to ensure that the adhesive and the surface beneath the coating are completely free from moisture to prevent yellowing in white joints and color variations in colored joints.
- The joint filler applied dries within 24 hours on walls. For floor applications, workers can walk on the application area after 48 hours, and the area can be opened to pedestrian traffic after 7 days.
- One should take care to ensure that the consistency of the joint filler applied is the same for all surfaces.
- To prevent the joint filler from being damaged, cleaning materials such as bleach, hydrochloric acid, and lime removers should not be used. Yurtbay Cleaner should be used to clean the joint fillers.

CONSUMPTION

Consumption amount varies according to the tile size, thickness, and joint width.

Tile Size	Joint Depth	Joint Spacing	Consumption Amount
10x10	6 mm	3 mm	600 gr
20x20	6 mm	3 mm	300 gr
33x33	6 mm	3 mm	200 gr

Note: The given consumption amounts are approximate values and may vary depending on the smoothness of the application surface and the thickness of application.

SHELF LIFE

It can be used within 12 months from the date of production if stored in dry, moisture-free environments and in its original packaging. Packages of 1 and 5 kg can be used within 24 months.

The package should be tightly closed when not in use.

BAG	PALLET		
BAG WEIGHT / kg	QUANTITY/BAG	GROSS WEIGHT/kg	DIMENSIONS/cm
1	320	320	110x110x65
5	64	320	110x110x65
20	64	1280	110x110x100

*The specified weights do not include the pallet.





YURT BAY SILICONE FUGA

ELASTIC SILICONE-ADDED JOINT FILLER

YURT BAY SILICONE FUGA is a cement-based, silicon-added joint filler material offering enhanced water-repellent properties, and is suitable for joint gaps of 1 to 6 mm.



CG1

AREAS OF APPLICATION

It is used for filling joint gaps of 1 to 6 mm between coating materials such as floor and wall ceramics, marble, and natural stone.

EXAMPLES OF APPLICATION

- Indoor walls and floors
- Outdoor floor

APPLICATION INFORMATION [23 °C AND 50% R.H.]

Product type	: Powder
Product color	: Colored powder (15 colors)
Mixing ratio	: 6.2 - 6.6 liters of water for a 20 kg mixture
Pot life	: Max. 1.5 hours
Application temperature	: Between +5 °C and +35 °C
Time required for usability	: Min. 24 hours [Light pedestrian traffic]
Time required for complete hardening	: 28 days

PRODUCT PERFORMANCE CHARACTERISTICS

-Wear resistance	: $\leq 2000 \text{ mm}^3$
-Flexural strength after dry storage	: $\geq 2,5 \text{ N/mm}^2$
-Compressive strength after dry storage	: $\geq 15 \text{ N/mm}^2$
-Water absorption after 30 minutes	: $\leq 5 \text{ g}$
-Water absorption after 240 minutes	: $\leq 10 \text{ g}$
-Shrinkage	: $\leq 3 \text{ mm/m}$

*These values are obtained as a result of laboratory tests in compliance with standards. Values may vary in different application environments.

SURFACE PREPARATION

The joint spacings of tile surfaces must be clean, dry, empty, and free from dust, and any oil stains or materials that prevent adhesion must be removed from the surface. To ensure better adhesion of the joint filler to the tile surfaces, the joint spacings should be moistened with a damp sponge.

PREPARATION OF THE MIXTURE

6.2 - 6.6 liters of clean water is poured into a clean, round-shaped container, and 20 kg of powder product is gradually added and mixed until the mixture becomes homogeneous and contains no lumps. A low-speed mixer should be used for mixing. Fresh mortar should be rest for 5 minutes and remixed before application.

APPLICATION

The prepared YURT BAY SILICONE FUGA joint filler should be pressed diagonally into the joint spacings with a rubber or rubber-based trowel. Joints should be cleaned diagonally with a damp sponge as soon as the joint surface starts to dry. The joint filler is wiped and polished with a dry cloth once it has fully hardened. The prepared mortar should be used within 1.5 hours.

APPLICATION CONDITIONS

- The temperature of the ambient air and the application surface should be between 5 and 35°C.
- The mixture should not be applied when the surface is extremely hot, or when the weather is very sunny, or extremely windy.

WARNINGS AND RECOMMENDATIONS

- Once the product is mixed, it should be used within the pot life. During application, products whose pot life has expired should definitely not be used.
- After application, one should take care to ensure that the adhesive and the surface beneath the coating are completely free from moisture to prevent yellowing in white joints and color variations in colored joints.
- The joint filler applied dries within 24 hours on walls. For floor applications, workers can walk on the application area after 48 hours, and the area can be opened to pedestrian traffic after 7 days.
- One should take care to ensure that the consistency of the joint filler applied is the same for all surfaces.
- To prevent the joint filler from being damaged, cleaning materials such as bleach, hydrochloric acid, and lime removers should not be used. Yurtbay Cleaner should be used to clean the joint fillers.

CONSUMPTION

Consumption amount varies according to the tile size, thickness, and joint width.

Tile Size	Joint Depth	Joint Spacing	Consumption Amount
10x10	6 mm	3 mm	600 gr
20x20	6 mm	3 mm	300 gr
33x33	6 mm	3 mm	200 gr

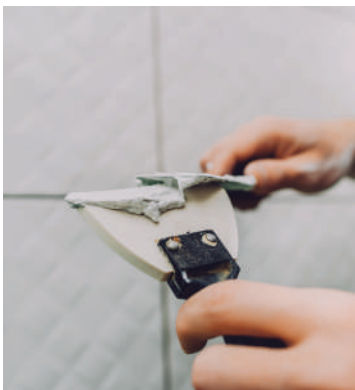
Note: The given consumption amounts are approximate values and may vary depending on the smoothness of the application surface and the thickness of application.

SHELF LIFE

It can be used within 12 months from the date of production if stored in dry, moisture-free environments and in its original packaging. Packages of 5 kg can be used within 24 months. The package should be tightly closed when not in use.

BAG	PALLET		
BAG WEIGHT / kg	QUANTITY/BAG	GROSS WEIGHT/kg	DIMENSIONS/cm
5	64	320	110x110x65
20	64	1280	110x110x100

*The specified weights do not include the pallet.





YURT BAY RUSTIC FUGA

RUSTIC LOOKING JOINT FILLER

YURT BAY RUSTIC FUGA is a cement-based, flexible joint filler material offering high performance with water-repellent properties, and is suitable for decorative coatings with joint gaps of 6 to 20 mm.


CG2WA

AREAS OF APPLICATION

It is used for filling joint gaps of 6 to 20 mm between rustic looking coating materials such as coating bricks, marble, and natural stone in indoor and outdoor environments.

EXAMPLES OF APPLICATION

- Indoor walls and floors
- Outdoor walls and floors
- Natural stone and decorative surfaces

APPLICATION INFORMATION [23 °C AND 50% R.H.]

Product type	: Powder
Product color	: Colored powder [15 colors]
Mixing ratio	: 4 - 4.2 liters of water for a 20 kg mixture
Pot life	: Max. 1.5 hours
Application temperature	: Between +5 °C and +35 °C
Time required for usability	: Min. 24 hours [Light pedestrian traffic]
Time required for complete hardening	: 28 days

PRODUCT PERFORMANCE CHARACTERISTICS

-Wear resistance	: $\leq 1000 \text{ mm}^3$
-Flexural strength after dry storage	: $\geq 2,5 \text{ N/mm}^2$
-Compressive strength after dry storage	: $\geq 15 \text{ N/mm}^2$
-Water absorption after 30 minutes	: $\leq 2\text{g}$
-Water absorption after 240 minutes	: $\leq 5\text{g}$
-Shrinkage	: $\leq 3\text{mm/m}$

*These values are obtained as a result of laboratory tests in compliance with standards. Values may vary in different application environments.

SURFACE PREPARATION

The joint spacings of tile surfaces must be clean, dry, empty, and free from dust, and any oil stains or materials that prevent adhesion must be removed from the surface. To ensure better adhesion of the joint filler to the tile surfaces, the joint spacings should be moistened with a damp sponge.

PREPARATION OF THE MIXTURE

4 - 4.2 liters of clean water is poured into a clean, round-shaped container, and 20 kg of powder product is gradually added and mixed until the mixture becomes homogeneous and contains no lumps. A low-speed mixer should be used for mixing. Fresh mortar should be rest for 5 minutes and remixed before application.

APPLICATION

The prepared YURT BAY RUSTIC FUGA joint filler should be applied to the joint spacings with a rubber or rubber-based trowel or a joint filler gun, without smudging the coating surface. Excessive joint filler on the surface is removed with a spatula, and the surface is finished after smoothing with a damp sponge before it dries completely. The prepared mortar should be used within 1.5 hours.

APPLICATION CONDITIONS

- The temperature of the ambient air and the application surface should be between 5 and 35°C.
- The mixture should not be applied when the surface is extremely hot, or when the weather is very sunny, or extremely windy.

WARNINGS AND RECOMMENDATIONS

- Once the product is mixed, it should be used within the pot life. During application, products whose pot life has expired should definitely not be used.
- After application, one should take care to ensure that the adhesive and the surface beneath the coating are completely free from moisture to prevent yellowing in white joints and color variations in colored joints.
- The joint filler applied dries within 24 hours on walls. For floor applications, workers can walk on the application area after 48 hours, and the area can be opened to pedestrian traffic after 7 days.
- One should take care to ensure that the consistency of the joint filler applied is the same for all surfaces.
- To prevent the joint filler from being damaged, cleaning materials such as bleach, hydrochloric acid, and lime removers should not be used. Yurtbay Cleaner should be used to clean the joint fillers.

CONSUMPTION

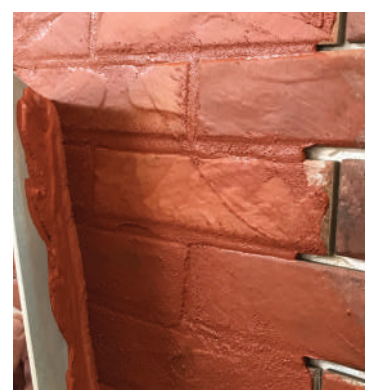
Consumption amount varies according to the tile size, thickness, and joint width.

SHEL LIFE

It can be used within 12 months from the date of production if stored in dry, moisture-free environments and in its original packaging. The package should be tightly closed when not in use.

BAG	PALLET		
BAG WEIGHT / kg	QUANTITY/BAG	GROSS WEIGHT/kg	DIMENSIONS/cm
20	64	1280	110x110x100

*The specified weights do not include the pallet.





YURTBAY DIGITAL FLEX FUGA

RUSTIC LOOKING JOINT FILLER

YURTBAY DIGITAL FLEX FUGA is a cement-based, silicon-added joint filler material offering high performance with reduced water absorption, and is suitable for joint gaps of 2 to 10 mm, particularly for Yurtbay digital series.



AREAS OF APPLICATION

It is used for filling joint gaps of 2 to 10 mm between coating materials such as floor and wall ceramics, marble, and natural stone.

UYGULAMA ÖRNEKLERİ

- Indoor walls and floors
- Outdoor walls and floors

APPLICATION INFORMATION [23 °C AND 50% R.H.]

Product type : Powder
Product color : Colored powder
Mixing ratio : 1.55 - 1.65 liters of water for a 5 kg mixture

Pot life : Max. 1.5 hours
Application temperature : Between +5 °C and +35 °C
Time required for usability : Min. 24 hours [Light foot traffic]
Time required for complete hardening : 28 days

PRODUCT PERFORMANCE CHARACTERISTICS

-Wear resistance : $\leq 1000 \text{ mm}^3$
-Flexural strength after dry storage : $\geq 2,5 \text{ N/mm}^2$
-Compressive strength after dry storage : $\geq 15 \text{ N/mm}^2$
-Water absorption after 30 minutes : $\leq 2\text{g}$
-Water absorption after 240 minutes : $\leq 5\text{g}$
-Shrinkage : $\leq 3\text{mm/m}$

*These values are obtained as a result of laboratory tests in compliance with standards. Values may vary in different application environments.

SURFACE PREPARATION

The joint spacings of tile surfaces must be clean, dry, empty, and free from dust, and any oil stains or materials that prevent adhesion must be removed from the surface. To ensure better adhesion of the joint filler to the tile surfaces, the joint spacings should be moistened with a damp sponge.

PREPARATION OF THE MIXTURE

1.55 - 1.65 liters of clean water is poured into a clean, round-shaped container, and 5 kg of powder product is gradually added and mixed until the mixture becomes homogeneous and contains no lumps. A low-speed mixer should be used for mixing. Fresh mortar should be rest for 5 minutes and remixed before application.

APPLICATION

The prepared YURTBAY DIGITAL FLEX FUGA joint filler should be pressed diagonally into the joint spacings with a rubber or rubber-based trowel. Joints should be cleaned diagonally with a damp sponge as soon as the joint surface starts to dry. The joint filler is wiped and polished with a dry cloth once it has fully hardened.

APPLICATION CONDITIONS

- It should not be applied on surfaces that have frozen, are melting, or are prone to a risk of freezing.
- The mixture should not be applied when the surface is extremely hot, or when the weather is very sunny, or extremely windy.

WARNINGS AND RECOMMENDATIONS

Once the product is mixed, it should be used within the pot life. During application, products whose pot life has expired should definitely not be used. After application, one should take care to ensure that the adhesive and the surface beneath the coating are completely free from moisture to prevent yellowing in white joints and color variations in colored joints. The joint filler applied dries within 24 hours on walls. For floor applications, workers can walk on the application area after 48 hours, and the area can be opened to pedestrian traffic after 7 days. One should take care to ensure that the consistency of the joint filler applied is the same for all surfaces. To prevent the joint filler from being damaged, cleaning materials such as bleach, hydrochloric acid, and lime removers should not be used. Yurtbay Cleaner should be used to clean the joint fillers.

CONSUMPTION

Consumption amount varies according to the tile size, thickness, and joint width.

Tile Size	Joint Depth	Joint Spacing	Consumption Amount
10x10	6 mm	3 mm	600 gr
20x20	6 mm	3 mm	300 gr
33x33	6 mm	3 mm	200 gr

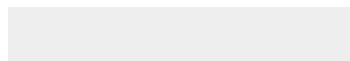
SHELF LIFE

It can be used within 24 months from the date of production if stored in dry, moisture-free environments and in its original packaging. The package should be tightly closed when not in use.

BAG	PALLET
BAG WEIGHT / kg	QUANTITY/BAG
5	64
GROSS WEIGHT/kg	DIMENSIONS/cm
320	110x110x65

* The specified weight amounts exclude the pallet.

DIGITAL JOINT FILLER COLORS



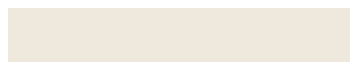
Mist White 111



Concrete 7314



Gray 7021



Cream 2312



Beige 2122



Anthracite 7432



Cream 2313



Brown 3031



Dark Gray 7241



Cream 2315



Brown 3033



Yellow 2023



Olive 5134



YURTBAY HAVUZYAP FLEX FUGA

ELASTIC, SILICONE-ADDED JOINT FILLER RESISTANT TO MOLD AND ALGAE FORMATION FOR 2-10 mm JOINT SPACES

YURTBAY HAVUZYAP FLEX FUGA is a cement-based, flexible joint filler material offering high performance with water-repellent properties and resistant to mold and algae formation, and is suitable for pool and water reservoir applications with joint gaps of 2 to 10 mm.



AREAS OF APPLICATION

It is used for filling joint gaps of 2 to 10 mm between coating materials applied to wet areas, such as pools, water reservoirs, terraces, and roofs, in indoor and outdoor environments.

EXAMPLES OF APPLICATION

- Pool
- Wall
- Floor

APPLICATION INFORMATION [23 °C AND 50% R.H.]

Product type	: Powder
Product color	: Colored powder
Mixing ratio	: 6.4 – 6.8 liters of water for a 20 kg mixture
Pot life	: Max. 1.5 hours
Application temperature	: Between +5 °C and +35 °C
Time required for usability	: Min. 24 hours [Light foot traffic]
Time required for complete hardening	: 28 days

PRODUCT PERFORMANCE CHARACTERISTICS

-Wear resistance	: ≤ 1000 mm3
-Flexural strength after dry storage	: ≥ 2,5 N/mm2
-Compressive strength after dry storage	: ≥ 15 N/mm2
-Water absorption after 30 minutes	: ≤ 2g
-Water absorption after 240 minutes	: ≤ 5g
-Shrinkage	: ≤ 3mm/m

*These values are obtained as a result of laboratory tests in compliance with standards. Values may vary in different application environments.

SURFACE PREPARATION

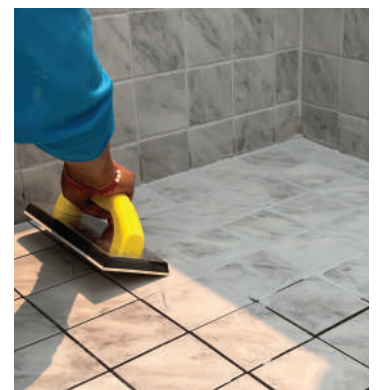
The joint spacings of tile surfaces must be clean, dry, empty, and free from dust, and any oil stains or materials that prevent adhesion must be removed from the surface. To ensure better adhesion of the joint filler to the tile surfaces, the joint spacings should be moistened with a damp sponge.

PREPARATION OF THE MIXTURE

6.4 – 6.8 liters of clean water is poured into a clean, round-shaped container, and 20 kg of powder product is gradually added and mixed until the mixture becomes homogeneous and contains no lumps. A low-speed mixer should be used for mixing. Fresh mortar should be rest for 5 minutes and remixed before application.

APPLICATION

The prepared YURTBAY HAVUZYAP FLEX FUGA joint filler should be applied to the joint spacings with a rubber or rubber-based trowel or a joint filler gun, without smudging the coating surface. Excessive joint filler on the surface is removed with a spatula, and the surface is finished after smoothing with a damp sponge before it dries completely.



APPLICATION CONDITIONS

- The temperature of the ambient air and the application surface should be between 5 and 35 °C.
- It should not be applied on surfaces that have frozen, are melting, or are prone to a risk of freezing.
- The mixture should not be applied when the surface is extremely hot, or when the weather is very sunny, or extremely windy.

WARNINGS AND RECOMMENDATIONS

- Once the product is mixed, it should be used within the pot life. During application, products whose pot life has expired should definitely not be used.
- After application, one should take care to ensure that the adhesive and the surface beneath the coating are completely free from moisture to prevent yellowing in white joints and color variations in colored joints.
- The joint filler applied dries within 24 hours on walls. For floor applications, workers can walk on the application area after 48 hours, and the area can be opened to pedestrian traffic after 7 days.
- One should take care to ensure that the consistency of the joint filler applied is the same for all surfaces.
- To prevent the joint filler from being damaged, cleaning materials such as bleach, hydrochloric acid, and lime removers should not be used. Yurtbay Cleaner should be used to clean the joint fillers.

CONSUMPTION

Consumption amount varies according to the tile size, thickness, and joint width.

Tile Size	Joint Depth	Joint Spacing	Consumption Amount
10x10	6 mm	3 mm	600 gr
33x33	6 mm	3 mm	300 gr

Note: The given consumption amounts are approximate values and may vary depending on the smoothness of the application surface and the thickness of the application.

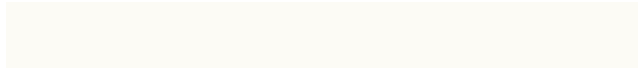
SHELF LIFE

It can be used within 12 months from the date of production if stored in dry, moisture-free environments and in its original packaging. The package should be tightly closed when not in use.

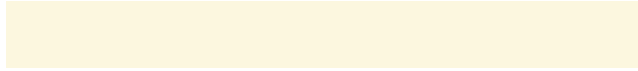
BAG	PALLET		
BAG WEIGHT / kg	QUANTITY/BAG	GROSS WEIGHT/kg	DIMENSIONS/cm
20	64	1280	110x110x100

* The specified weight amounts exclude the pallet.

Grout Colors



White



Ivory



Cream



Beige



Cream 2312



Mist White 1111



Light Gray



Earth Beige



Dark Gray



Brown 3031



Brown 3033



Anthracite 7432



Olive 5134



Sand Beige



Concr



Cream 2315



Cream 2313



Cappadocia Beige



Yellow 2023



New Beige



Gray 7021



Beige 2122



Cotto



Brown



Dark Gray 7241



Black

Note: The joint filler colors shown in the brochure may vary from their original tones depending on the printing technique and the light in the environment. A controlled sample should be applied to obtain colors as close as possible to the original colors.

Grout Consumption Calculator

Ceramic Size [cm]	Joint Depth [mm]	Consumption [gr/m ²]			
		Joint Width [mm]			
		3	4	5	6
2,5x2,5	6	2400	3200	4000	4750
	8	3200	4250	5300	6350
5x5	6	1200	1600	2000	2400
	8	1600	2100	2650	3200
10x10	6	600	800	1000	1200
	8	800	1100	1350	1600
20x20	6	300	400	500	600
	8	400	550	700	800
	10	500	700	850	1000
25x33	6	250	300	350	450
	8	300	400	500	600
	10	350	500	600	700
25x40	6	200	250	350	400
	8	250	350	450	550
	10	350	450	550	650
30x30	6	200	300	400	400
	8	300	350	450	550
	10	350	450	550	700
	12	400	550	700	800
30x60	6	150	200	250	300
	8	200	300	350	400
	10	250	350	450	500
	12	300	400	500	600

SILICONE FUGA



Silicone-Added Joint Filler [1-6 mm]

FLEX FUGA



Elastic Silicone-Added Joint Filler [2-10 mm]

HAVUZYAP FLEX FUGA



Elastic, Silicone Added Joint Filler Resistant to Bacteria and Mold [2-10 mm]

RUSTIC FUGA



Joint Filler with Rustic Appearance [6-20 mm]

DIGITAL FLEX FUGA



Elastic Silicone-Added Joint Filler [2-10 mm]

Ceramic Size [cm]	Joint Depth [mm]	Consumption [gr/m2]			
		Joint Width [mm]			
		3	4	5	6
33x33	6	200	250	300	400
	8	250	350	400	500
	10	300	400	500	600
	12	400	500	600	750
40x40	6	150	200	250	300
	8	200	300	350	400
	10	250	350	450	500
	12	300	400	500	600
45x45	6	150	200	250	300
	8	200	250	300	350
	10	250	300	400	450
	12	300	350	450	550
30x90	6	150	200	250	300
	8	200	250	300	350
	10	250	300	400	450
	12	300	350	450	550
45x90	6	100	150	200	200
	8	150	200	250	300
	10	200	250	300	350
	12	200	300	350	400
50x100	6	100	150	150	200
	8	150	200	200	250
	10	150	200	250	300
	12	200	250	300	400
60x60	6	100	200	200	200
	8	150	200	250	300
	10	200	250	300	350
	12	200	300	350	400
60x120	6	100	100	150	150
	8	100	150	200	200
	10	150	200	200	250
	12	150	200	250	300

Grout Products

Fuga Application Areas by Venue

PRODUCT NAME	INDOOR	WET SURFACE (BATHROOM, SHOWER)	OUTDOOR SPACES (BALCONY, TERRACE)	WALKING AREAS, GARDEN WALL	EXTERIOR SIDING	AREAS WITH FLOOR HEATING SYSTEMS	SWIMMING POOL, WATER RESERVOIR
SILICONE FUGA	✓	✓	✓	✗	✗	✗	✗
FLEX FUGA	✓	✓	✓	✓	✓	✓	✓
RUSTIG FUGA	✓	✓	✗	✗	✓	✗	✗
DIGITAL FLEX FUGA	✓	✓	✓	✓	✓	✓	✓
HAVUZYAP FLEX FUGA	✓	✓	✓	✓	✓	✓	✓

FREQUENTLY ASKED QUESTIONS

GROUT

What is Grout? How to Renew Grout?

Grout is a chemical compound used to fill the spaces between building materials including ceramics, granite, and marble. Once the floor and wall coatings are installed, the joint channels between them are filled using a filler material. This prevents various liquids, powders, or similar substances from entering underneath the coating through these channels over time and damaging the layers beneath the coating material.

Grouts are used in many living spaces, particularly in bathrooms and kitchens. However, these products can also wear out over time, as is the case for all other building materials, so joints may need to be renewed. Grout has two different types, namely cement-based and reaction-based [epoxy], that are commonly used in both interior and exterior joint renewal works. Cement-based grout contain polymer binder additives and feature low water absorption and high durability. They are commonly used in wet volume surfaces, such as bathrooms and kitchens, thanks to their high water-repellent capabilities.

The grout renewal process also reduces the potential for major structural problems, such as water leakage through gaps, by sealing the spaces between the coating materials. This renewal process is performed in five main stages, allowing users to take maximum advantage of all these benefits. These stages are as follows:

- Selection of the new grout
- Procurement of materials required for renewal
- Removal of the old grout material
- Application of new grout between tiles
- Cleaning the renewed grout.

grouts are available in various colors. Therefore, as the first step of the grout renewal process, focusing on selecting a grout color that matches your tiles will enable you to achieve the best visual result. To avoid color matching problems, you should also use as little water as possible when preparing the grout. Using too much water can cause a change in the color of the grout. Before applying the new grout, the old filler should be removed as it would have lost its structural integrity.

You can use specially manufactured electric tools to remove the old grout from between the tiles. If you do not have such a tool, you can easily remove the old deformed grout from the surface with the help of a joint scraper apparatus. You can remove large pieces by hand without using a tool, and then you can collect the smaller pieces between the tiles with a vacuum cleaner.

Once the dust and dirt are completely removed from between the tiles, wipe the surface with a clean cloth and then dry it to proceed to the application step. We recommend you to review our Yurtbay Construction Chemicals product catalog to select the appropriate grout.

FREQUENTLY ASKED QUESTIONS

GROUT

Is it necessary to apply grout and how often should it be renewed?

Yes, it is necessary. It fills the spaces between the coating materials laid and prevents water and moisture from passing to the surface beneath them. It is also useful for balancing the bending movements of the coating materials over time. The grout may be renewed if they are excessively deformed, cracked, or started to chalking, or if mold is observed due to the use of inappropriate grout in wet areas. We recommend you to review our Yurtbay Construction Chemicals product catalog to select the appropriate grout.

Can we apply the new grout over the existing one?

It is not recommended to apply new grout over the existing joint. The most appropriate approach would be to remove the old joint and apply a new one.

What is the full drying time or time to put into use for grout?

Before exposing the grout to water or heavy foot traffic, it should be allowed to cure for 24 hours in wall applications and 48 hours in floor applications. It is recommended to wait 7 days at least before complete use.

Is it necessary to use a special grout for bathrooms?

Yes, since surfaces in bathrooms are among the areas we refer to as wet areas, it is recommended to use water-repellent, highly resistant, silicone-added grout in these areas. We recommend you to review our Yurtbay Construction Chemicals product catalog to select the appropriate grout.

Does grout increase the durability of tiles in ceramic applications?

Grout primarily serves as a filler between tiles and contributes to the overall strength of the tile surface. The strength of tile installation largely depends on the adhesive used during installation, but the grout also provides support. Properly applied grout ensures an even distribution of loads, prevents tiles from slipping, and provides protection against the entry of dirt and moisture into the surface underneath. However, for structural integrity, it is very important to have a solid and well-prepared substrate and use high-quality tile adhesive.

What is the difference between cement and grout, and which one is more advantageous?

White cement is a type of cement that has a special composition and is preferred in aesthetical terms. Grout is a material that fills the gaps or spaces between structural elements. Grout is generally used at the junction points of structural elements, such as ceramic, stone, brick, or concrete. Accordingly, white cement is a type of hydraulic binder, grout is a product used to fill the gaps between structural elements and serve as a waterproofing material. In general, white cement is used for the production of grout, but the use of grout in applications is more advantageous compared to white cement due to various ingredients.

TECHNICAL MORTARS AND PLASTERS





YURT BAY MACHINE PLASTER

CEMENT-BASED READY-TO-USE MACHINE PLASTER

It is a cement-based plaster that contains suitable filling material and is intended for application by machine for indoor and outdoor use.



AREAS OF APPLICATION

It can be used on concrete, brick, exposed concrete, briquette concrete, and ceiling surfaces in indoor and outdoor environments.

EXAMPLES OF APPLICATION

İç ve dış mekan

: Exposed concrete

: On building materials such as k and briquette.

APPLICATION INFORMATION [23 °C AND 50% R.H.]

Product type	: Gray Powder
Mixing ratio	: 6.5 - 7.5 liters of water for a 5 kg mixture
Period in which the mortar should be used	: Max. 2 hours
Application temperature	: Between +5 °C and +35 °C

SURFACE PREPARATION

Before application, mold oil, dust, paint, and adhesion-reducing substances must be removed from the surface. Besides, cracks and holes should be repaired with the same material or an appropriate Yurtbay repair mortar. Also, the surface should be moistened with water, if necessary. To improve adhesion strength and balance surface absorption, the surface should be primed with Yurtbay Acrylic Primer in a single layer after cleaning, and it should be allowed to cure for at least 2 hours. Installation should be made immediately after the surface has dried. The surface should definitely be moistened before application.

PREPARATION OF THE MIXTURE

YURT BAY MACHINE PLASTER is mixed [6.5 - 7.5 liters of water per 35 kg bag] with a plaster mixing and spraying machine and sprayed onto the surface.

APPLICATION

The material should be applied with a spraying machine, and it must be ensured that its thickness is even over the entire surface. After application, the surface should be leveled with a template. The thickness of the plaster application should not exceed 1.5 cm for a single layer and 3 cm in total. It is important to smooth the plaster that has started to cure with a trowel without any delays. Then, the application surface should be kept moist for one week.

APPLICATION CONDITIONS

- The temperature of the ambient air and the application surface should be between 5 °C and 35°C.
- It should not be applied on surfaces that have frozen, are melting, or are prone to a risk of freezing.
- The mixture should not be applied when the surface is extremely hot, or when the weather is very sunny, or extremely windy.

WARNINGS AND RECOMMENDATIONS

- No foreign materials [lime, cement, plaster, etc.] should be added to the prepared plaster.
- It is recommended to apply the plaster at temperatures between 5°C and 35°C.
- If the weather is windy, the product should be protected against quick drying.
- Plaster mesh should be used at joints of different materials and at points where a movement is expected.
- Further applications on YURT BAY MACHINE PLASTER should not be made before 7 days depending on the ambient temperature.
- The durability of the product can be enhanced by watering the surface at regular intervals within 3 days after application.
- These application and usage instructions should be strictly followed.
- Do not inhale directly. In case of contact with eyes, wash eyes with plenty of water, and consult a doctor if necessary.
- For more information, please refer to the product safety data sheet.

CONSUMPTION

The consumption amount for a plaster thickness of 1 cm is approximately 15-16 kg/m²

Note: The given consumption amounts are approximate values and may vary depending on the smoothness of the application surface and the thickness of the application.

SHELF LIFE

It can be used within 12 months from the date of production if stored in dry, moisture-free environments and in its original packaging. The package should be tightly closed when not in use.

BAG	PALLET		
BAG WEIGHT / kg	QUANTITY/BAG	GROSS WEIGHT/kg	DIMENSIONS/cm
35	48	1680	110x110x90

* The specified weight amounts exclude the pallet.





YURT BAY GAS CONCRETE

GAS CONCRETE ADHESIVE

YURT BAY GAS CONCRETE is a cement-based gas concrete masonry mortar offering a high performance with a reduced slip feature.



AREAS OF APPLICATION

It is used in the masonry of building materials with high water absorption such as concrete and bricks.

APPLICATION INFORMATION [23 °C AND 50% R.H.]

Product type	: Powder
Mixing ratio	: 5.5 - 6 liters of water for a 25 kg mixture
Pot life	: Max. 3 hours
Application temperature	: Between +5 °C and +30 °C
Workability time	: 5-10 minutes
Time required for usability	: Min. 24 hours [Light foot traffic]
Time required for complete hardening	: 28 days

SURFACE PREPARATION

The surfaces to which Yurtbay Gas Concrete will be applied must be clean and solid. Dust, oil, and materials that prevent adhesion must be cleaned from the surface, and residues of mortar, cement, etc., must be scraped off the surface. To correct the defects on the floor, the mortar should be leveled only for the first layer.

PREPARATION OF THE MIXTURE

5.5 - 6 liters of clean water is poured into a clean, round-shaped container, and 25 kg of powder product is gradually added and mixed until the mixture becomes homogeneous and contains no lumps. A low-speed mixer should be used for mixing. Fresh mortar should be rest for 5 minutes and remixed before application.

APPLICATION

YURT BAY GAS CONCRETE mortar prepared should be applied evenly to the surface with a suitable steel trowel [10x10x10 mm]. During application, one should take care to leave a maximum of 3 mm joint gaps both horizontally and vertically. The prepared mortar should be used within 3 hours.

APPLICATION CONDITIONS

- The temperature of the ambient air and the application surface should be between 5 and 30 °C.
- It should not be applied on surfaces that have frozen, are melting, or are prone to a risk of freezing.
- The mixture should not be applied when the surface is extremely hot, or when the weather is very sunny, or extremely windy.

WARNINGS AND RECOMMENDATIONS

- If the material starts to crust during the open holding time, it should be remixed before application.
- It is not recommended to rewet the material which has started to crust.
- Foreign materials should never be added.

CONSUMPTION

Average consumption is 3-5 kg for 1 m2 area.

Note: The given consumption amounts are approximate values and may vary depending on the smoothness of the application surface and the thickness of the application.

SHELF LIFE

The given consumption amounts are approximate values and may vary depending on the smoothness of the application surface and the thickness of the application.

BAG	PALLET		
BAG WEIGHT / kg	QUANTITY/BAG	GROSS WEIGHT/kg	DIMENSIONS/cm
25	64	1600	110x110x100

* The specified weight amounts exclude the pallet.





YURTBAY GROUT MORTAR

GROUT MORTAR

YURTBAY GROUT MORTAR is a cement-based, high-strength, non-shrink, fluidic, polymer-modified, single-component grout mortar.



AREAS OF APPLICATION

It is used in fixing steel columns to foundations, assembling prefabricated concrete structural elements, filling machine foundations, filling gaps, and repairing concrete areas. It can be used in all indoor and outdoor environments.

EXAMPLES OF APPLICATION

Indoor and outdoor

Concrete flooring

: Prefabricated concrete

: Cement-based screed

APPLICATION INFORMATION [23 °C AND 50% R.H.]

Product type	: Gray Powder
Mixing ratio	: 4 - 4.5 liters of water for a 25 kg mixture
Pot life	: Max. 20 minutes
Application temperature	: Between +5 °C and +30 °C
Time required for usability	: Min. 24 hours [28 days for full curing]

SURFACE PREPARATION

The surfaces to which Yurtbay Grout Mortar will be applied must be clean and solid. The residues and dust that could prevent adhesion must be removed from the surface. A primer layer should be applied on extremely dry and dusty surfaces.

PREPARATION OF THE MIXTURE

Half of the 25 kg bag of Grout Mortar should be slowly added to 4 - 4.5 liters of water and mixed for about 2-3 minutes until obtaining a homogeneous mixture. Mixing process should be carried out with a low-speed mixer. Then, the remaining half of the material in the bag should be added to the mortar and mixed until there are no lumps.

APPLICATION

The prepared mortar should immediately be poured from one side of the container without interruption. It should be ensured that there is no air left in the mortar; otherwise, air bubbles prevent surface contact and can therefore weaken adhesion. During the mortar filling process, sufficient pressure should be applied to maintain fluidity. The process should be completed within 15 minutes to benefit best from the product's expansion feature.

APPLICATION CONDITIONS

- The temperature of the ambient air and the application surface should be between 5 °C and 30°C.
- It should not be applied on surfaces that have frozen, are melting, or are prone to a risk of freezing.
- The mixture should not be applied when the surface is extremely hot, or when the weather is very sunny, or extremely windy.

WARNINGS AND RECOMMENDATIONS

- It should not be used on a surface that is not solid enough to bear itself.
- Foreign materials should never be added.
- It is not recommended to rewet the material which has started to harden.
- The prepared mortar should be consumed within 15 minutes. This period may vary depending on weather conditions.
- It is recommended to use a pump for processes that will take more than 15 minutes to complete.

CONSUMPTION

Consumption amount for 1 mm thickness is 1.5 - 2 kg/m²

Note: The given consumption amounts are approximate values and may vary depending on the smoothness of the application surface and the thickness of the application.

SHELF LIFE

Note: The given consumption amounts are approximate values and may vary depending on the smoothness of the application surface and the thickness of the application.

BAG	PALLET		
BAG WEIGHT / kg	QUANTITY/BAG	GROSS WEIGHT/kg	DIMENSIONS/cm
25	64	1600	110x110x100

* The specified weight amounts exclude the pallet.





YURT BAY REPAIR MORTAR-THICK

THICK REPAIR MORTAR [6-30 mm]

YURT BAY THICK REPAIR MORTAR is a cement-based, polymer-modified surface repair mortar offering high performance.



AREAS OF APPLICATION

It is used in restoration works within indoor and outdoor spaces to create a smooth surface before ceramic coating, insulation, and painting, or to repair plaster and large cracks of 6 to 30 mm.

EXAMPLES OF APPLICATION

Indoor and outdoor

: Exposed concrete

: On building materials such as k and briquette.

: Cement-based plaster,

APPLICATION INFORMATION [23 °C AND 50% R.H.]

Product type : Powder
Product color : Gray or White
Mixing ratio : 5.5 - 6 liters of water for a 25 kg mixture

Pot life : Max. 2 hours
Application temperature : Between +5 °C and +35 °C
Application time : 30 minutes
Time required for usability : Min. 24 hours
Curing time for joint filler : Min. 3 hours
Time required for complete hardening : 28 days

ÜRÜN PERFORMANS ÖZELLİKLERİ

Compressive strength : $\geq 10 \text{ N/mm}^2$
YBond formed by adhesion : $\geq 0,8 \text{ N/mm}^2$
YFire rating : A1

*These values are obtained as a result of laboratory tests in compliance with standards. Values may vary in different application environments.

SURFACE PREPARATION

The surfaces to which Yurtbay Repair Mortar Thick will be applied must be clean and solid. The residues that could prevent adhesion must be removed from the surface. The surface should definitely be moistened before application.

PREPARATION OF THE MIXTURE

5.5 - 6 liters of clean water is poured into a clean, round-shaped container, and 25 kg of powder product is gradually added and mixed until the mixture becomes homogeneous and contains no lumps. A low-speed mixer should be used for mixing. Fresh mortar should be rest for 5 minutes and remixed before application.

APPLICATION

The prepared mortar should be filled into the broken, cracked areas on the surface by applying pressure with a steel trowel, and the thickness of the application on the surface should not exceed 5-30 mm. The surface should be smoothed with a damp sponge. In the case of multiple layers, the subsequent layer should be applied at least 3 hours later than the previous one.

APPLICATION CONDITIONS

- The temperature of the ambient air and the application surface should be between 5 and 35°C.
- It should not be applied on surfaces that have frozen, are melting, or are prone to a risk of freezing.
- The mixture should not be applied when the surface is extremely hot, or when the weather is very sunny, or extremely windy.

WARNINGS AND RECOMMENDATIONS

- The temperature of the ambient air and the application surface should be between 5 and 35°C.
- It should not be applied on surfaces that have frozen, are melting, or are prone to a risk of freezing.
- The mixture should not be applied when the surface is extremely hot, or when the weather is very sunny, or extremely windy.

CONSUMPTION

The consumption for 1 mm thickness is 1.5-2 kg/m²

Note: The given consumption amounts are approximate values and may vary depending on the smoothness of the application surface and the thickness of the application.

SHELF LIFE

It can be used within 12 months from the date of production if stored in dry, moisture-free environments and in its original packaging. The package should be tightly closed when not in use.

BAG	PALLET		
BAG WEIGHT / kg	QUANTITY / BAG	GROSS WEIGHT/kg	DIMENSIONS/cm
25	64	1600	110x110x100

* The specified weight amounts exclude the pallet.





YURT BAY REPAIR MORTAR-THIN

THIN REPAIR MORTAR [1-5 mm]

YURT BAY THIN REPAIR MORTAR is a cement-based, high-performance, polymer modified fine surface repair mortar.



AREAS OF APPLICATION

It is used in restoration works within indoor and outdoor spaces to create a smooth surface before ceramic coating, insulation, and painting, or to repair plaster and small cracks of 1 to 5 mm.

EXAMPLES OF APPLICATION

Indoor and outdoor;

- : Cement-based plaster,
- : Exposed concrete
- : On building materials such as k and briquette.

APPLICATION INFORMATION [23 °C AND 50% R.H.]

Product type : Powder
 Product color : Gray or White
 Mixing ratio : 5.5 - 6 liters of water for a 25 kg mixture
 Pot life : Max. 2 hours
 Application temperature : Between +5 °C and +35 °C
 Application time : 30 minutes
 Time required for usability : Min. 24 hours
 Curing time for joint filler : Min. 3 hours
 Time required for complete hardening : 28 days

PRODUCT PERFORMANCE CHARACTERISTICS

Compressive strength : $\geq 10 \text{ N/mm}^2$
 Bond formed by adhesion : $\geq 0,8 \text{ N/mm}^2$
 Fire rating : A1

*These values are obtained as a result of laboratory tests in compliance with standards. Values may vary in different application environments.

SURFACE PREPARATION

The surfaces to which Yurtbay Repair Mortar Thin will be applied must be clean and solid. The residues that could prevent adhesion must be removed from the surface. The surface should definitely be moistened before application.

PREPARATION OF THE MIXTURE

5.5 - 6 liters of clean water is poured into a clean, round-shaped container, and 25 kg of powder product is gradually added and mixed until the mixture becomes homogeneous and contains no lumps. A low-speed mixer should be used for mixing. Fresh mortar should be rest for 5 minutes and remixed before application.

APPLICATION

The prepared mortar should be filled into the broken, cracked areas on the surface by applying pressure with a steel trowel, and the thickness of the application on the surface should not exceed 1-5 mm. The surface should be smoothed with a damp sponge. In the case of multiple layers, the subsequent layer should be applied at least 3 hours later than the previous one.

APPLICATION CONDITIONS

- The temperature of the ambient air and the application surface should be between 5 °C and 35°C.
- It should not be applied on surfaces that have frozen, are melting, or are prone to a risk of freezing.
- The mixture should not be applied when the surface is extremely hot, or when the weather is very sunny, or extremely windy.

WARNINGS AND RECOMMENDATIONS

- Foreign materials should never be added.
- It is not recommended to rewet the material which has started to crust.
- The prepared mortar should be consumed within 2 hours. This period may vary depending on weather conditions.
- After application, the surface should be moistened at specific intervals for 1-2 days.

CONSUMPTION

The consumption for 1 mm thickness is 1.5-2 kg/m²

Note: The given consumption amounts are approximate values and may vary depending on the smoothness of the application surface and the thickness of the application.

SHELF LIFE

It can be used within 12 months from the date of production if stored in dry, moisture-free environments and in its original packaging. The package should be tightly closed when not in use.

BAG	PALLET		
BAG WEIGHT / kg	QUANTITY / BAG	GROSS WEIGHT/kg	DIMENSIONS/cm
25	64	1600	110x110x100

* The specified weight amounts exclude the pallet.





YURT BAY BRICK MORTAR

BRICK MORTAR

YURT BAY BRICK MORTAR is a cement-based, polymer-modified brick masonry mortar.



AREAS OF APPLICATION

It is used for masonry of walls with bricks of all sizes in the interior and exterior of buildings.

EXAMPLES OF APPLICATION

Indoor and outdoor;

- : Brick
- : Pumice
- : Concrete briquet

APPLICATION INFORMATION (23 °C AND 50% R.H.)

Product type	: Powder
Product color	: Gray or White
Mixing ratio	: 5.5 - 6 liters of water for a 25 kg mixture

Pot life	: Max. 2 hours
Application temperature	: Between +5 °C and +35 °C
Application time	: 30 minutes
Time required for usability	: Min. 24 hours
Curing time for joint filler	: Min. 3 hours
Time required for complete hardening	: 28 days

PRODUCT PERFORMANCE CHARACTERISTICS

Grain size	: ≤2mm
Workability time of the fresh mortar	: ≥120 minutes
Dry mortar density : 1500±150 kg/m ³	: 1500±150 kg/m ³
Capillary water absorption coefficient	: ≤0,5 g
Water vapor permeability	: ≤ u 5/20
Compressive strength	: ≥10 N/mm ²

*These values are obtained as a result of laboratory tests in compliance with standards. Values may vary in different application environments.

SURFACE PREPARATION

The surfaces to which Yurtbay Brick Mortar will be applied must be clean and solid. Dust, oil, and materials that prevent adhesion must be cleaned from the surface, and residues of mortar, cement, etc., must be scraped off the surface.

PREPARATION OF THE MIXTURE

4.5 - 5.5 liters of clean water is poured into a clean, round-shaped container, and 25 kg of powder product is gradually added and mixed until the mixture becomes homogeneous and contains no lumps. A low-speed mixer should be used for mixing. Fresh mortar should be rest for 5 minutes and remixed before application.

APPLICATION

The prepared mortar is applied evenly to the horizontal and vertical surfaces of the masonry material by using a steel trowel. The masonry material is installed by hitting with a hammer from above and the sides. The prepared mortar should be used within 4 hours.

APPLICATION CONDITIONS

- The temperature of the ambient air and the application surface should be between 5 and 35 °C.
- It should not be applied on surfaces that have frozen, are melting, or are prone to a risk of freezing.
- The mixture should not be applied when the surface is extremely hot, or when the weather is very sunny, or extremely windy.

WARNINGS AND RECOMMENDATIONS

- After application, the surface should be moistened at specific intervals for 1-2 days.
- Foreign materials should never be added.
- It is not recommended to rewet the material which has started to crust.

CONSUMPTION

The consumption amount varies according to the surface areas of products, such as bricks, thickness of bricks, and the method of application of the mortar on these materials. See. Brick mortar consumption values

SHELF LIFE

It can be used within 12 months from the date of production if stored in dry, moisture-free environments and in its original packaging. The package should be tightly closed when not in use.

BAG		PALLET	
BAG WEIGHT / kg	QUANTITY / BAG	GROSS WEIGHT/kg	DIMENSIONS/cm
25	64	1600	110x110x100

* The specified weight amounts exclude the pallet.

BRICK MORTAR CONSUMPTION VALUES

Brick Type	Consumption per m ²
8,5 Blok	9-10 kg.
10 Blok	12-13 kg.
13,5 Blok	14-15 kg.





YURT BAY READY RENDER

READY-TO-USE PLASTER

YURT BAY READY-TO-USE PLASTER is a fine, cement-based, fiber-reinforced ready-to-use hand plaster that contain water-repellent additives.



AREAS OF APPLICATION

It can be used on concrete, brick, exposed concrete, pumice, briquette concrete, and ceiling surfaces in indoor and outdoor environments.

EXAMPLES OF APPLICATION

Indoor and outdoor;

: Cement-based plaster,

: Exposed concrete

: On building materials such as k and briquette.

APPLICATION INFORMATION (23 °C AND 50% R.H.)

Product type : Powder

Product color : Gray

Mixing ratio : 6.5 - 7.5 liters of water for a 35 kg powder mixture

Period in which the mortar should be used : Max. 2 hours

Application temperature : Between +5 °C and +35 °C

SURFACE PREPARATION

The surfaces to which Yurtbay Ready Render will be applied must be clean and solid. The residues that could prevent adhesion must be removed from the surface. Cracks and defects deeper than 3 mm must be repaired with Yurtbay Repair Mortar at least 24 hours before application. The surface should definitely be moistened before application.

PREPARATION OF THE MIXTURE

6.5 - 7.5 liters of clean water is poured into a clean, round-shaped container, and 35 kg of powder product is gradually added and mixed until the mixture becomes homogeneous and contains no lumps. A low-speed mixer should be used for mixing. Fresh mortar should be rest for 5 minutes and remixed before application.

APPLICATION

The product should be applied to the surface with an even thickness by using a steel trowel. The thickness of the first application should be at least 1 mm. If case of multiple layers, the second layer should be applied after the first layer has cured, with a maximum thickness of 2.5 cm. Once the plaster is hardened sufficiently after this application, the surface is smoothed with a smoothing trowel, and finished with a damp sponge. The prepared mortar should be used within 2 hours.

APPLICATION CONDITIONS

•The temperature of the ambient air and the application surface should be between 5 °C and 35°C.

•It should not be applied on surfaces that have frozen, are melting, or are prone to a risk of freezing.

•The mixture should not be applied when the surface is extremely hot, or when the weather is very sunny, or extremely windy.

WARNINGS AND RECOMMENDATIONS

•After application, the surface should be moistened at specific intervals for 1-2 days.

•Foreign materials should never be added.

•It is not recommended to rewet the material which has started to crust.

CONSUMPTION

The consumption amount for a plaster thickness of 1 cm is approximately 14-15 kg/m²

Note: The given consumption amounts are approximate values and may vary depending on the smoothness of the application surface and the thickness of the application.

SHELF LIFE

It can be used within 12 months from the date of production if stored in dry, moisture-free environments and in its original packaging. The package should be tightly closed when not in use.

BAG	PALLET		
BAG WEIGHT / kg	QUANTITY / BAG	GROSS WEIGHT/kg	DIMENSIONS/cm
35	48	1680	110x110x90

* The specified weight amounts exclude the pallet.





YURTBAY READY ROUGH RENDER

READY-TO-USE ROUGH PLASTER

YURTBAY ROUGH PLASTER is a cement-based, hand-applied additive-containing rough plaster used in indoor and outdoor environments, offering high adhesion and strength features.



AREAS OF APPLICATION

It can be used on concrete, brick, exposed concrete, pumice, briquette concrete, and ceiling surfaces in indoor and outdoor environments.

EXAMPLES OF APPLICATION

Indoor and outdoor : Cement-based plaster
: Exposed concrete
: On building materials such as k and briquette.

APPLICATION INFORMATION (23 °C AND 50% R.H.)

Product type : Powder
Product color : Gray
Mixing ratio : 4.5 - 5.5 liters of water for a 25 kg powder mixture
Period in which the mortar should be used : Max. 2 hours
Application temperature : Between +5 °C and +35 °C
Time required for usability : Min. 24 hours
Waiting time between layers : 24 hours
Time required for complete hardening : 28 days

SURFACE PREPARATION

The surfaces to which Yurtbay Ready Rough Render will be applied must be clean and solid. The residues that could prevent adhesion must be removed from the surface. Cracks and defects deeper than 3 mm must be repaired with Yurtbay Repair Mortar at least 24 hours before application. The surface should definitely be moistened before application.

PREPARATION OF THE MIXTURE

4.5 - 5.5 liters of clean water is poured into a clean, round-shaped container, and 25 kg of powder product is gradually added and mixed until the mixture becomes homogeneous and contains no lumps. A low-speed mixer should be used for mixing. Fresh mortar should be rest for 5 minutes and remixed before application.

APPLICATION

The product should be applied to the surface with an even thickness by using a steel trowel. The thickness of the first application should be at least 1 mm. If case of multiple layers, the second layer should be applied after the first layer has cured, with a maximum thickness of 2.5 cm. Once the plaster is hardened sufficiently after this application, the surface is smoothed with a smoothing trowel, and finished with a damp sponge. The prepared mortar should be used within 2 hours.

APPLICATION CONDITIONS

The product should be applied to the surface with an even thickness by using a steel trowel. The thickness of the first application should be at least 1 mm. If case of multiple layers, the second layer should be applied after the first layer has cured, with a maximum thickness of 2.5 cm. Once the plaster is hardened sufficiently after this application, the surface is smoothed with a smoothing trowel, and finished with a damp sponge. The prepared mortar should be used within 2 hours.

WARNINGS AND RECOMMENDATIONS

·After application, the surface should be moistened at specific intervals for 1-2 days.
·A primer layer should be applied on surfaces with high water absorption, such as exposed concrete.
·Foreign materials should never be added.
·It is not recommended to rewet the material which has started to crust.

CONSUMPTION

Consumption amount for 1 mm thickness is 14 - 16 kg/m²

Note: The given consumption amounts are approximate values and may vary depending on the smoothness of the application surface and the thickness of the application.

SHELF LIFE

It can be used within 12 months from the date of production if stored in dry, moisture-free environments and in its original packaging. The package should be tightly closed when not in use.

BAG	PALLET		
BAG WEIGHT / kg	QUANTITY / BAG	GROSS WEIGHT/kg	DIMENSIONS/cm
25	64	1600	110x110x100

*The specified weights do not include the pallet.



FREQUENTLY ASKED QUESTIONS

TECHNICAL MORTARS AND PLASTERS

What are the differences between outdoor and indoor technical mortars?

The differences between outdoor and indoor technical mortars arise from environmental conditions, strength requirements, and application conditions.

-Indoor mortars: They are not directly exposed to temperature and humidity changes and provide adequate performance with standard cement-based or lime-modified solutions.

-Outdoor mortars: They should be highly resistant against thermal stresses caused by freeze-thaw cycles, rain, UV rays, and temperature differences.

When should we prefer fast-setting mortars?

Our YURTBAY WATER STOP product is recommended for stopping active water leaks that may occur in water reservoirs, small water pools, and similar areas.

What are the benefits of using a rough concrete primer before plaster application?

For cement- or gypsum-based applications on smooth and shiny surfaces like exposed concrete, as well as on porous and highly absorbent surfaces such as gypsum-plaster, gypsum, aerated concrete, particleboard, and briquettes, or on old surfaces, acrylic polymer-based, filler primers should be preferred to increase adhesion and balance the absorbency of the surface.

Yurtbay Exposed Concrete Primer roughens the surface thanks to its granular structure and ensures a stronger bonding of the plaster to be applied on it. Moreover, in applications on absorbent surfaces, it prevents rapid water loss of the plaster, thus preventing crack formation.

WATERPROOFING MATERIALS





YURT BAY CRISTALLIZED

CRISTALLIZED WATERPROOFING SLURRY

YURT BAY CRISTALLIZED is a cement-based, capillary-action, single-component, cristallized water isolation mortar that can be used in both negative and positive sides.



AREAS OF APPLICATION

It is suitable for use in underground garages and storage areas, basements, swimming pools, elevator shafts, and waterproofing of foundations and bearing walls.

EXAMPLES OF APPLICATION

Indoor and outdoor : Surfaces like concrete, screed.

APPLICATION INFORMATION [23 °C AND 50% R.H.]

Product type : Gray Powder
Mixing ratio : 7 - 7.5 liters of water for a 25 kg powder component
Pot life : Max. 30 minutes
Application temperature : Between +5 °C and +30 °C
Waiting time between layers : min. 6 hours
Time required for usability : 1 week

SURFACE PREPARATION

The surfaces on which the material will be applied must be clean, smooth, and damp. Dust, oil, and materials that prevent adhesion must be cleaned from the surface, and residues of mortar, cement, etc., must be scraped off the surface. Defects on the surface that are deeper than 2 cm must be repaired at least one day before the application. The surface should be moistened before the application, but care should be taken to ensure that no water layer remains.

SURFACE PREPARATION

The surfaces on which the material will be applied must be clean, smooth, and damp. Dust, oil, and materials that prevent adhesion must be cleaned from the surface, and residues of mortar, cement, etc., must be scraped off the surface. Defects on the surface that are deeper than 2 cm must be repaired at least one day before the application. The surface should be moistened before the application, but care should be taken to ensure that no water layer remains.

APPLICATION

The prepared YURT BAY CRISTALLIZED mortar should be applied with a suitable brush in two layers. The second layer is applied perpendicular to the first coat when it is still damp and the surface has fully hardened. The amount of mortar to be prepared should not exceed the amount to be consumed within 30 minutes.

APPLICATION CONDITIONS

- The temperature of the ambient air and the application surface should be between 5 °C and 35°C.
- It should not be applied on surfaces that have frozen, are melting, or are prone to a risk of freezing.
- The mixture should not be applied when the surface is extremely hot, or when the weather is very sunny, or extremely windy.

WARNINGS AND RECOMMENDATIONS

- Protect the applied surface from external factors such as sun, wind, rain, and frost.
- After application, the surface should be kept moist for 5-7 days.
- Foreign materials should never be added to the mixture.

CONSUMPTION

Consumption amount for single layer is 1.5 - 2 kg/m²

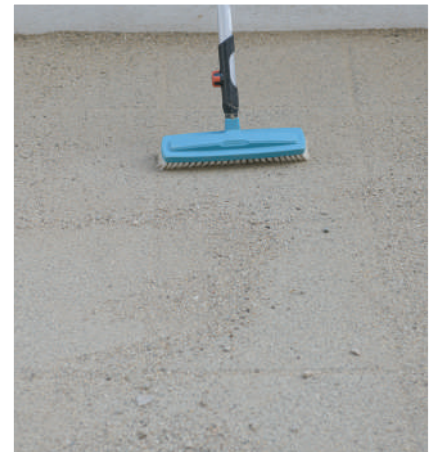
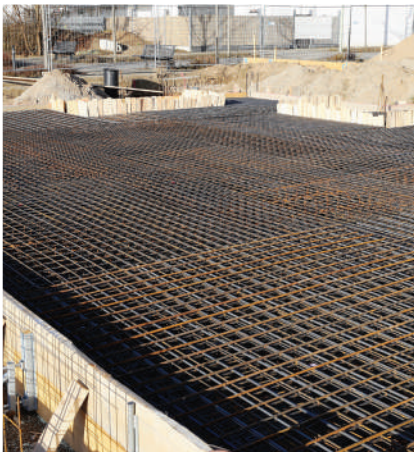
Note: The given consumption amounts are approximate values and may vary depending on the smoothness of the application surface and the thickness of the application.

SHELF LIFE

It can be used within 12 months from the date of production if stored in dry, moisture-free environments and in its original packaging. The package should be tightly closed when not in use.

BAG	PALLET		
BAG WEIGHT / kg	QUANTITY/BAG	GROSS WEIGHT/kg	DIMENSIONS/cm
25	64	1600	110x110x100

*The specified weights do not include the pallet.





YURT BAY AQUA LATEX

DUAL-COMPONENT SEMI-ELASTIC WATERPROOFING MORTAR

YURT BAY AQUALATEX is a cement-based, dual-component, semi-elastic waterproofing material.



AREAS OF APPLICATION

It is applied as a waterproofing material in wet areas such as kitchens, bathrooms, toilets, small terraces, and for waterproofing of foundations and basements, as well as small-sized water reservoirs. It is suitable for use in drinking water reservoirs.

UYGULAMA ÖRNEKLERİ

Indoor and outdoor: Surfaces such as concrete, plaster, and screed.

APPLICATION INFORMATION [23 °C AND 50% R.H.]

Product type/color:	: 1st component: Gray powder 2nd component: White liquid
Mixing ratio	: 6 kg liquid component for 20 kg powder component
Pot life	: Max. 2 hours
Application temperature	: Between +5 °C and +35 °C
Waiting time between layers	: Min. 6 hours
Time required for usability	: 1 week

PRODUCT PERFORMANCE CHARACTERISTICS

Water impermeability	: ≤20 g
Crack bridging capability	: ≥0,75 mm
Tensile adhesion strength	: ≥0,5 MPa [N/mm ²]
-Initial	: ≥0,5 MPa [N/mm ²]
-After immersed in water	: ≥0,5 MPa [N/mm ²]
-After aging with heat	: ≥0,5 MPa [N/mm ²]
-After freeze-thaw cycling	: ≥0,5 MPa [N/mm ²]
-After contact with lime water	: ≥0,5 MPa [N/mm ²]

*These values are obtained as a result of laboratory tests in compliance with standards. Values may vary in different application environments.

YÜZEY HAZIRLIĞI

The surfaces on which the material will be applied must be clean, smooth, and damp. Dust, oil, and materials that prevent adhesion must be cleaned from the surface, and residues of mortar, cement, etc., must be scraped off the surface. Defects on the surface that are deeper than 2 cm must be repaired at least one day before the application. The surfaces with high water absorption and high porosity should be moistened before the application, but care should be taken to ensure that no water layer remains.

PREPARATION OF THE MIXTURE

20 kg of powder mixture is gradually added to 6 kg of liquid component and mixed until the mixture becomes homogeneous and contains no lumps. A low-speed mixer should be used for mixing for 2-3 minutes. Fresh mortar should be rest for 2 - 3 minutes and remixed before application.

APPLICATION

The prepared YURT BAY AQUALATEX mortar should be applied with a suitable roll or brush in two layers. The layers should be applied perpendicular to each other. Second layer should be applied at least 5-6 hours later than the first one. The corner joints in the application area should be rounded and the mortar should be reinforced with mesh. The prepared mortar should be used within 2 hours.

APPLICATION CONDITIONS

- The temperature of the ambient air and the application surface should be between 5 and 35 °C.
- It should not be applied on surfaces that have frozen, are melting, or are prone to a risk of freezing.
- The mixture should not be applied when the surface is extremely hot, or when the weather is very sunny, or extremely windy.

WARNINGS AND RECOMMENDATIONS

- Protect the application surface from sun, rain, and dust for 1 day before the application.
- After the application, the area should be waited for 1 week before use or covering.
- Foreign materials should never be added to the mixture.

CONSUMPTION

Consumption amount for 1 mm thickness is 1.5 - 2 kg/m²

Note: The given consumption amounts are approximate values and may vary depending on the smoothness of the application surface and the thickness of the application.

SHELF LIFE

It can be used within 12 months from the date of production if stored in dry, moisture-free environments and in its original packaging. The package should be tightly closed when not in use.

BAG	PALLET		
BAG WEIGHT / kg	QUANTITY / BAG	GROSS WEIGHT/kg	DIMENSIONS/cm
20	40	800	110x110x55

DRUM	PALLET		
DRUM WEIGHT / kg	QUANTITY / DRUM	GROSS WEIGHT/kg	DIMENSIONS/cm
6	40	240	110x110x45

* The specified weight amounts exclude the pallet.





YURT BAY AQUA LATEX PLUS

DUAL COMPONENT FULL ELASTIC WATERPROOFING MORTAR

YURT BAY AQUA LATEX PLUS is a fully elastic dual-component waterproofing and concrete protection material that contains cement-based, emulsion polymer modified liquid components and chemical additives that enhance water impermeability, applicable in indoor and outdoor environments.



AREAS OF APPLICATION

It is applied as a waterproofing material resistant to pedestrian traffic in permanently wet areas such as pools, water reservoirs, terraces, and in the waterproofing of foundations and basements, as well as in wet volume spaces [bathrooms, kitchens, etc.] It is suitable for use in drinking water reservoirs.

EXAMPLES OF APPLICATION

Indoor and outdoor;

: Surfaces such as concrete, plaster, screed.

APPLICATION INFORMATION (23 °C AND 50% R.H.)

Product type/color:	: 1st component: Gray powder 2nd component: White liquid
Mixing ratio	: : For 20 kg of powder component, 10 kg of liquid component
Pot life	: Max. 2 hours
Application temperature	: Between +5 °C and +35 °C
Waiting time between layers	: Min. 6 hours
Time required for usability	: 1 week

PRODUCT PERFORMANCE CHARACTERISTICS

Water impermeability	: ≤20 g
Crack bridging capability	: ≥0,75 mm
Tensile adhesion strength	
-Initial	: ≥0,5 MPa [N/mm ²]
-After immersed in water	: ≥0,5 MPa [N/mm ²]
-After aging with heat	: ≥0,5 MPa [N/mm ²]
-After freeze-thaw cycling	: ≥0,5 MPa [N/mm ²]
-After contact with lime water	: ≥0,5 MPa [N/mm ²]

*These values are obtained as a result of laboratory tests in compliance with standards. Values may vary in different application environments.

SURFACE PREPARATION

The surfaces on which the material will be applied must be clean, smooth, and damp. Dust, oil, and materials that prevent adhesion must be cleaned from the surface, and residues of mortar, cement, etc., must be scraped off the surface. Defects on the surface that are deeper than 2 cm must be repaired at least one day before the application. The surfaces with high water absorption and high porosity should be moistened before the application, but care should be taken to ensure that no water layer remains.

PREPARATION OF THE MIXTURE

20 kg of powder mixture is gradually added to 6 kg of liquid component and mixed until the mixture becomes homogeneous and contains no lumps. A low-speed mixer should be used for mixing for 2-3 minutes. Fresh mortar should be rest for 2 - 3 minutes and remixed before application.

APPLICATION

The prepared YURT BAY AQUA LATEX PLUS mortar should be applied with a suitable roll or brush in two layers. The layers should be applied perpendicular to each other. Second layer should be applied at least 5-6 hours later than the first one. The corner joints in the application area should be rounded and the mortar should be reinforced with mesh. The prepared mortar should be used within 2 hours.

APPLICATION CONDITIONS

- The temperature of the ambient air and the application surface should be between 5 and 35 °C.
- It should not be applied on surfaces that have frozen, are melting, or are prone to a risk of freezing.
- The mixture should not be applied when the surface is extremely hot, or when the weather is very sunny, or extremely windy.

WARNINGS AND RECOMMENDATIONS

- The application surface should be protected from sun, rain, and dust for 1 day before the application.
- After the application, the area should be waited for at least 7 week before use or covering.
- In the case of water reservoir, the product must cure for at least 28 days.
- Foreign materials should never be added to the mixture.

CONSUMPTION

Consumption amount for 1 mm thickness is 1.5 - 2 kg/m²

Note: The given consumption amounts are approximate values and may vary depending on the smoothness of the application surface and the thickness of the application.

SHELF LIFE

It can be used within 12 months from the date of production if stored in dry, moisture-free environments and in its original packaging. The package should be tightly closed when not in use.

BAG	PALLET		
BAG WEIGHT / kg	QUANTITY / BAG	GROSS WEIGHT/kg	DIMENSIONS/cm
20	40	800	110x110x55

DRUM	PALLET		
DRUM WEIGHT / kg	QUANTITY / DRUM	GROSS WEIGHT/kg	DIMENSIONS/cm
10	40	400	110x110x80

* The specified weight amounts exclude the pallet.





YURTBAY AQUA LATEX UV

DUAL COMPONENT UV RESISTANT WATERPROOFING MORTAR

YURTBAY AQUALATEX UV is a cement-based, emulsion polymer modified, fully elastic waterproofing material that contains dual component, one of which is liquid.



AREAS OF APPLICATION

It is applied as a waterproofing material that is resistant to UV and light pedestrian traffic in wet areas such as kitchens, bathrooms, toilets, terraces, and in pools and water reservoirs. It is suitable for use in drinking water reservoirs.

EXAMPLES OF APPLICATION

Indoor and outdoor;

: Surfaces such as concrete, plaster, screed.

PRODUCT PERFORMANCE CHARACTERISTICS

Product type/color:	: 1st component: Gray powder 2nd component: White liquid
Mixing ratio	: For 20 kg of powder component, 8 kg of liquid component
Pot life	: Max. 2 hours
Application temperature	: Between +5 °C and +35 °C
Waiting time between layers	: Min. 6 hours
Time required for usability	: 1 week

PRODUCT PERFORMANCE CHARACTERISTICS

Water impermeability	: ≤20 g
Crack bridging capability	: ≥0,75 mm
Tensile adhesion strength	
-Initial	: ≥0,5 MPa [N/mm ²]
-After immersed in water	: ≥0,5 MPa [N/mm ²]
-After aging with heat	: ≥0,5 MPa [N/mm ²]
-After freeze-thaw cycling	: ≥0,5 MPa [N/mm ²]
-After contact with lime water	: ≥0,5 MPa [N/mm ²]

*These values are obtained as a result of laboratory tests in compliance with standards. Values may vary in different application environments.

SURFACE PREPARATION

The surfaces on which the material will be applied must be clean, smooth, and damp. Dust, grease, dirt, and materials that prevent adhesion must be cleaned from the surface, and residues such as mortar and cement must be scraped off the surface. Defects on the surface that are deeper than 2 cm must be repaired at least one day before the application. The surfaces with high water absorption and high porosity should be moistened before the application, but care should be taken to ensure that no water layer remains.

PREPARATION OF THE MIXTURE

20 kg of powder mixture is gradually added to 6 kg of liquid component and mixed until the mixture becomes homogeneous and contains no lumps. A low-speed mixer should be used for mixing for 2-3 minutes. Fresh mortar should be rest for 2 - 3 minutes and remixed before application.

APPLICATION

The prepared YURTBAY AQUALATEX UV mortar should be applied with a suitable roll or brush in two layers. The layers should be applied perpendicular to each other. Second layer should be applied at least 5-6 hours later than the first one.

The corner joints in the application area should be rounded and the mortar should be reinforced with mesh.

The prepared mortar should be used within 2 hours.

APPLICATION CONDITIONS

- The temperature of the ambient air and the application surface should be between 5 and 35 °C.
- It should not be applied on surfaces that have frozen, are melting, or are prone to a risk of freezing.
- The mixture should not be applied when the surface is extremely hot, or when the weather is very sunny, or extremely windy.

WARNINGS AND RECOMMENDATIONS

- The application surface should be protected from sun, rain, and dust for 1 day before the application.
- After the application, the area should be waited for at least 7 week before use or covering.
- In the case of water reservoir, the product must cure for at least 28 days.
- Foreign materials should never be added to the mixture.

CONSUMPTION

Consumption amount for 1 mm thickness is 1.5 - 2 kg/m²

Note: The given consumption amounts are approximate values and may vary depending on the smoothness of the application surface and the thickness of the application.

SHELF LIFE

It can be used within 12 months from the date of production if stored in dry, moisture-free environments and in its original packaging. The package should be tightly closed when not in use.

BAG		PALLET	
BAG WEIGHT / kg	QUANTITY / BAG	GROSS WEIGHT/kg	DIMENSIONS/cm
20	40	800	80x110x55

DRUM		PALLET	
DRUM WEIGHT / kg	QUANTITY / DRUM	GROSS WEIGHT/kg	DIMENSIONS/cm
8	40	320	110x110x80

* The specified weight amounts exclude the pallet.





YURTBAY ISOQUA

SINGLE COMPONENT, READY-TO-USE, ELASTIC WATERPROOFING MATERIAL

It is an elastomeric polymer-based, single component liquid plastic coating and elastic waterproofing material.



AREAS OF APPLICATION

It is used for waterproofing of sloped roofs and terraces covered with concrete, plaster, cement board, aluminum, PVC, polyester, or wood, of building facades, and of details such as cracks, eaves, and chimney bases.

PRODUCT PERFORMANCE CHARACTERISTICS

Application temperature	: Between +5 °C and +35 °C
Pot life	: Max. 2 hours
Waiting time between layers	: Min. 4 hours
Time required for usability	: Max. 7 days

PERFORMANCE INFORMATION

Water impermeability: ≤20 g	: ≥20 g
Crack bridging capability	: ≥0,75 mm
Crack bridging under standard conditions	: ≥0,75 mm [EN 14891]
Crack bridging [-5°C]	: ≥0,75 mm [EN 14891]
Crack bridging [-20°C]	: ≥0,75 mm [EN 14891]

Tensile adhesion strength:

-Initial	: ≥0,5 N/mm ²
- After immersed in water	: ≥0,5 N/mm ²
- After aging with heat	: ≥0,5 N/mm ²
- After freeze-thaw cycling	: ≥0,5 N/mm ²
- After contact with lime water	: ≥0,5 N/mm ²

*Values are obtained from experiments made under laboratory conditions at 23 ± 2°C and 50% ± 5% relative humidity. The values above may vary depending on surface and environmental conditions.

SURFACE PREPARATION

- The residues that could prevent adhesion must be removed from the surface.
- The surface should have cured and be solid.
- The surface should be leveled and sloped to prevent water accumulation.
- If there are defects and cracks on the application surface, they should be corrected with Yurtbay Repair Mortar.
- Before application on absorbent surfaces, it is recommended to use Yurtbay Acrylic Primer depending on the absorbency of the surface.
- It is essential to use an anti-corrosive primer before using on metal surfaces.

PREPARATION OF THE MIXTURE

Before application, YURTBAY ISOQUA diluted with water at a ratio of 1/4 by volume should be applied to the surface, and left to dry for 3-4 hours. It should never be diluted except for use as a primer.

APPLICATION

After mixing, ISOQUA should be applied in 3 coats horizontally and 2 coats vertically with a brush or roller. The total thickness of the application should be 1 - 1.5 mm. Waiting time between layers is 4 hours at minimum depending on the ambient temperature. No additives should be added to the product.

APPLICATION CONDITIONS

- When the application is paused, the packaging must be kept closed. The product must be protected from freezing.
- The product should not be applied in very high temperatures, when the area is directly exposed to sunlight, or when it is very windy, foggy, rainy, or when there is a risk of frost.
- Surfaces exposed to pedestrian and load traffic should be covered with a protective coating material such as screed or ceramic.
- If ceramic will be installed on the top, high-performance adhesives of class O2 and above should be used according to TS EN 12004-1 standard.

WARNINGS AND RECOMMENDATIONS

- During application, care should be taken that the ambient and surface temperature is between 5°C and 35°C.
- It should not be applied against negative water pressure.
- The packages should be tightly closed when not in use.
- The product should not be applied when it is rainy, and the area should be protected from rain for 24 hours after application.
- In the coating process over waterproofing, care should be taken that the waterproofing material is not damaged by mechanical effects.

CONSUMPTION

The recommended consumption amount for a single layer application with a film thickness of 1 mm is

NOTE: This value may vary depending on surface and environmental conditions.

SHELF LIFE

12 months in closed packaging in a dry environment.

BUCKET		PALLET	
BUCKET WEIGHT / kg	QUANTITY / BUCKET	GROSS WEIGHT/kg	DIMENSIONS/cm
3	48	144	110x110x50
15	24	360	110x110x80

* The specified weight amounts exclude the pallet.





YURT BAY WATER STOP

WATER PLUGGING MORTAR

It is a plugging powder that is used temporarily stop water leaks, contains fast-setting mineral filler and special cement with polymer and catalyst additives.

AREAS OF APPLICATION

It is used in indoor and outdoor areas:

for plugging existing water leaks before waterproofing on mineral-based surfaces such as concrete, plaster, screed, etc., for stopping or blocking pressurized water leaks, strong water flows, and capillary water leaks before waterproofing, and for immediately cutting off active water leaks in walls, basements, tunnels, water reservoirs, elevator pits, and damaged concrete pipes, and for emergency sewer connections.

APPLICATION INFORMATION [23 °C AND 50% R.H.]

Product color : Gri powder
life : 40 sec.
Application temperature : between 5 °C and 35 °C
Final Drying : 2 minutes

SURFACE PREPARATION

Substances that may prevent adhesion, such as dust, dirt, oil, tar, pitch, paint, silicone, detergents, and mold oils should be removed from the surface before application. If there is leakage on the entire surface, a hole is opened at the lowest possible level to allow water to flow freely. Cracks and gaps on the surface should be widened until their depth is 20 mm, and any unattached pieces should be cleaned from the surface. It can be used on concrete, plaster, screed, and briquette.

ADVANTAGES OF THE PRODUCT

- Easily and quickly applied.
- An ideal auxiliary material for emergency waterproofing [isolation] works.
- Sets quickly, stops flowing water in a very short time. Any type of waterproofing material can be applied on it after 15-20 minutes.
- Does not shrink or crack.
- It does not contain chlorine, therefore causes no corrosion to the iron reinforcement
- It is applied from the opposite direction of the water flow [negative water pressure].
- Setting time can be controlled between 30 seconds and 2 minutes.

APPLICATION

Mix 0.2 litres of water with 1 kg of WATER STOP until the mixture is homogenous [The amount of the material should not exceed the amount that will be consumed in 2-3 minutes]. The paste-like product should be applied to the water leak location with a gloved hand while applying pressure for approximately two minutes.

APPLICATION CONDITIONS

- Since the reaction will start immediately after water is added, the mixture should be made in small amounts and consumed quickly.
- If the application is to be made in a wide area, it should be approached by applying from the outside towards the center, and finally, the hole where the pressurized water comes should be closed.

· In cases where there is too much water leak, WATER STOP can be applied directly in powder form.

· In low air temperatures, the mortar should be prepared and used with hot or warm water.

WARNINGS AND RECOMMENDATIONS

Since it is cement-based, do not inhale the dust, and avoid contact with skin and eyes. Please refer to the Safety Data Sheet for more detailed information.

CONSUMPTION

For every 1 liter of gap, approximately 1,600-2,000 g of WATER STOP should be mixed with about 0.500 kg of water and kneaded until it reaches a paste consistency.

Note: The given consumption amounts are approximate values and may vary depending on the smoothness of the application surface and the thickness of the application.

SHELF LIFE

Shelf life of the product is 6 months from the production date if stored in original unopened and undamaged packaging under dry conditions between 5 °C and 35 °C and protected from direct sunlight.

BUCKET		PALLET	
BUCKET WEIGHT / kg	QUANTITY / BUCKET	GROSS WEIGHT/kg	DIMENSIONS/cm
5	40	200	110x110x50

* The specified weight amounts exclude the pallet.





YURT BAY AQUA BİTÜM 1K

BITUMEN RUBBER-BASED, SINGLE COMPONENT, FLEXIBLE WATERPROOFING MATERIAL

It is a polymer modified, bitumen-based single-component waterproofing material with high elastic capability.



APPLICATION AREAS

It is used as a waterproofing material against ground moisture, leaking water, temporary and permanent water pressure in the foundations and bearing walls of all structures. It is not applied in rainy, cool, and humid weather. It is not applied on non-absorbent surfaces.

EXAMPLES OF APPLICATION

It can be applied on raw concrete, cement-based plasters and screeds, limestone, walls made of brick and block, and old bituminous surfaces. It is not applied on metal surfaces.

APPLICATION INFORMATION (23°C AND %50 R.H.)

Color	: Black
Density	: Approximately 0.65 kg/dm ³
Crack bridging	: ≥ 2 mm
Rain resistance	: ≤ 24 hours.
Water resistance	: Suitable
Flexibility at low temperature	: Suitable
Dimensional stability at high temperature	: Suitable
Thickness loss rate after complete drying	: Suitable

PRODUCT PERFORMANCE CHARACTERISTICS

- Dry residue rate: 85%
- Fire rating: Class E
- Water impermeability: 0.075 N/mm²
- Compressive strength 0.30 N/mm²
- Crack bridging: ≥ 2 mm

APPLICATION

It should be applied in 2 layers to the entire surface with the help of rollers, brushes, or spraying machines. The total application thickness should be determined according to the area where the application is made and the water pressure that to which the insulation layer will be exposed [Please refer to the consumption table], the second layer should be applied when the first layer is dry enough to avoid damage to the material.

On surfaces that are exposed to temporary and permanent water pressure, alkali-resistant glass fiber mesh should be placed on the entire surface between the first and second layers.

APPLICATION CONDITIONS

- Ambient temperature: between 5 °C and 35 °C.
- The product should not be applied in very hot weather and under direct sunlight.
- It should not be applied on surfaces that have frozen, or are prone to a risk of freezing.

WARNINGS AND RECOMMENDATIONS

- Foreign materials should never be added.
- The surfaces on which the product is applied must be protected against frost for a minimum of 3 days, and since it is not a UV-resistant material, it should be covered with a suitable material after the drying time.
- Soil should not be filled on the basement bearing walls on which the product is applied without making a protective application.
- The concrete surface on which the product is to be applied in areas exposed to continuous pressurized water must meet the requirements of TS EN 206.
- After the horizontal product application, a polyethylene cover should be laid over the entire surface before proceeding to the next operation.
- All tools used during application should be washed with water immediately after the application.
- Dry residues should be cleaned by using thinner.

CONSUMPTION

Application Area	Min application thickness [dry film]	Min. Consumption
Areas that are exposed to ground moisture [non-accumulating ground waters]	2 mm	2,5 lt / m ²
Temporary insulation against pressurized water [accumulated ground waters]	3 mm [application with mesh]	4,0 lt / m ²
Areas that are continuously exposed to pressurized water	4 mm	5,5 lt / m ²

SHELF LIFE

It can be used within 12 months from the production date if kept in closed packaging in moisture-free and dry environments. The packaging must be tightly closed when not in use. Packages must be protected from frost.

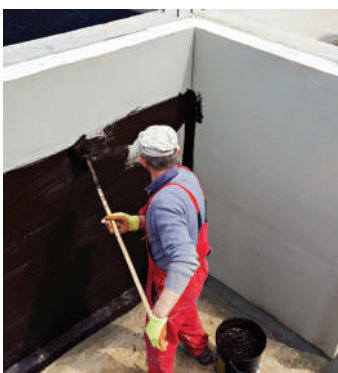
APPLICATION TOOLS

- Brush
- Roller
- Spraying Machine

STORAGE CONDITIONS

Keep away from acidic, basic, and oxidizing substances. Always store in original or similar closed containers. Pay attention to the recommendations on the packaging. Store in dry and well-ventilated places between 5 and 50°C. Protect from heat and sunlight. Keep away from fire sources. Do not store more than 4 products on top of each other.

BUCKET	PALLET
BUCKET WEIGHT / kg	QUANTITY / BUCKET
18	36
	GROSS WEIGHT/kg
	670
	DIMENSIONS/cm
	100x135x110





YURT BAY AQUA BİTÜM 2K

BITUMEN POLYMER-BASED, DUAL-COMPONENT, FLEXIBLE WATERPROOFING MATERIAL

It is a bitumen polymer-based dual-component waterproofing material with high elastic capability.



AREAS OF APPLICATION

It is used as a waterproofing material against ground moisture, leaking water, temporary and permanent water pressure in the foundations and bearing walls of all structures. It is not applied in rainy, cool, and humid weather. It is not applied on non-absorbent surfaces.

EXAMPLES OF APPLICATION

It can be applied on raw concrete, cement-based plasters and screeds, limestone, walls made of brick and block, and old bituminous surfaces. It is not applied on metal surfaces.

APPLICATION INFORMATION [23°C AND 50% R.H.]

Color	: Siyah
Density	: Approximately 1.0 kg/dm ³
Rain resistance	: ≤ 24 hours
Water resistance	: Suitable
Flexibility at low temperature	: Suitable
Dimensional stability at high temperature	: Suitable
Thickness loss rate upon completedrying	: Suitable

PRODUCT PERFORMANCE CHARACTERISTICS

- Dry residue rate: 80%
- Fire rating: Class E
- Water impermeability: 0.075 N/mm²
- Compressive strength 0.30 N/mm²
- Crack bridging: ≥2 mm

APPLICATION

It should be applied in 2 layers to the entire surface with the help of rollers, or brushes. The total application thickness should be determined according to the area where the application is made and the water pressure that to which the insulation layer will be exposed. The second layer should be applied when the first layer is dry enough to avoid damage to the material.

On surfaces that are exposed to temporary and permanent water pressure, alkali-resistant glass fiber mesh or seal should be placed on the entire surface between the first and second layers.

APPLICATION CONDITIONS

·Ambient temperature: between 5 °C and 35 °C.

The product should not be applied in very hot weather and under direct sunlight.

It should not be applied on surfaces that have frozen, or are prone to a risk of freezing.

WARNINGS AND RECOMMENDATIONS

- Foreign materials should never be added.
- The surfaces on which the product is applied must be protected against frost for a minimum of 3 days, and since it is not a UV resistant material, it should be covered with a suitable material after the drying time.
- Soil should not be filled on the basement bearing walls on which the product is applied without making a protective application.
- The concrete surface on which the product is to be applied in areas exposed to continuous pressurized water must meet the requirements of TS EN 206.
- After the horizontal product application, a polyethylene cover should be laid over the entire surface before proceeding to the next operation.
- All tools used during application should be washed with water immediately after the application.
- Dry residues should be cleaned by using thinner.

CONSUMPTION

Application Area	Min application thickness [dry film]	Min. Consumption
Areas that are exposed to ground moisture [non-accumulating ground waters]	2 mm	2,5 lt / m ²
Temporary insulation against pressurized water [accumulated ground waters]	3 mm [application with mesh]	4,0 lt / m ²
Areas that are continuously exposed to pressurized water	4 mm	5,5 lt / m ²

SHELF LIFE

It can be used within 12 months from the production date if kept in closed packaging in moisture-free and dry environments. The packaging must be tightly closed when not in use. Packages must be protected from frost.

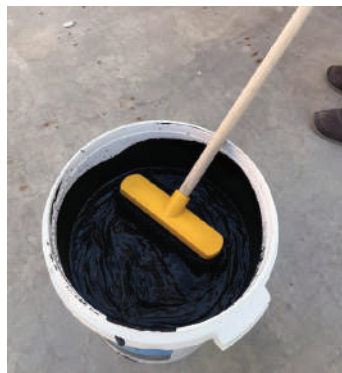
APPLICATION TOOLS

- Brush
- Roller

STORAGE CONDITIONS

Keep away from acidic, basic, and oxidizing substances. Always store in original or similar closed containers. Pay attention to the recommendations on the packaging. Store in dry and well-ventilated places between 5 and 50°C. Protect from heat and sunlight. Keep away from fire sources. Do not store more than 3 products on top of each other.

BUCKET	PALLET		
BUCKET WEIGHT / kg	QUANTITY / BUCKET	GROSS WEIGHT/kg	DIMENSIONS/cm
32	27	885	115x115x130





YURTBAY AQUA BİTÜM ASTAR

BITUMINOUS WATERPROOFING PRIMER

Bituminous Waterproofing Primer is a ready-to-use membrane and waterproofing primer obtained by mixing water and bitumen through special methods.



AREAS OF APPLICATION

It is used as a moisture barrier material in the foundations and basement bearing walls of buildings, as a waterproofing material in dry or damp areas such as kitchens, bathrooms, etc., as a primer in all bituminous coating applications, as a primer material and binder in applications of glass fiber, canvas, etc., as an impermeability and adhesion-enhancing additive in mortars and plasters made with cement and/or fine sand, and as a separator and protector in formworks to protect them from bending and deteriorating due to water.

EXAMPLES OF APPLICATION

It is not applied on exposed concrete, cement-based plasters and screeds, walls made of brick and briquettes, old bituminous surfaces, and metal surfaces.

APPLICATION INFORMATION (23°C AND 50% R.H.)

Base:	: Bitumen
Thinner:	: Water
Color:	: Dark brown when in packaging, black after drying
Consistency:	: Fluidic
Favorable Application Temperature:	: between 5°C and 35°C
Drying Time:	: Touch: 1 Hour
Full Drying:	: 5-6 Hours Test: 8 Days

PRODUCT PERFORMANCE CHARACTERISTICS

Softening Temperature: +70°C

SURFACE PREPARATION

The application surface must be freed from dust, dirt, rust, and oil, and loose particles must be scraped off. Sharp edges and corners should be rounded off. Large pores and cracks should be filled with Yurtbay Repair Mortar.

APPLICATION

Aqua Bitumen Primer is a cold application. It is applied with a brush or roller after mixed with water at a rate of 20% approximately.

APPLICATION CONDITIONS

-It dries in about 4-5 hours depending on weather conditions.
-It should not be applied in rainy weather or at temperatures below +5 degrees. Subsequent layer should not be applied before the previous one fully dries.

WARNINGS AND RECOMMENDATIONS

Avoid contact with eyes and skin. Please refer to the Safety Data Sheet for more detailed information.

CONSUMPTION

400 g/m on average depending on the smoothness of the applied surface. The primer should be stored in a cool, covered area and vertically, with a maximum of 5 products stacked on top of each other.

STORAGE CONDITIONS

It should not be exposed to sunlight. Its shelf life is 12 months if stored in its original packaging in dry and cool places.

SHELF LIFE

It can be used within 12 months from the production date if kept in closed packaging in moisture-free and dry environments. The packaging must be tightly closed when not in use. Packages must be protected from frost.

BUCKET	PALLET		
BUCKET WEIGHT / kg	QUANTITY / BUCKET	GROSS WEIGHT/kg	DIMENSIONS/cm
18	36	670	100x135x110



FREQUENTLY ASKED QUESTIONS

WATERPROOFING

What is waterproofing, and for what purpose is it made?

Waterproofing refers to applications made through various construction chemicals to increase the service life of structures and make them resistant to wear, corrosion, or leaks.

Waterproofing is one of the most critical steps for the safety, durability, and longevity of structures. The effects of water and moisture on structures may lead to significant problems if they are not managed properly. Particularly, water can seep into building materials such as concrete, brick, steel, and wood, causing these materials to deteriorate, lose their durability, and thus creating situations that threaten the overall safety of the structures.

The corrosion of reinforcement due to water seeping into concrete can weaken the structural systems, leading to serious structural problems. Such factors can lead to both economic losses and results that pose risks to human safety. Moreover, it is a stubborn fact that humid environments not only damage the structure but also cause health problems. Problems such as mold and fungus formation reduce the quality of life, causing allergies and respiratory disorders. Waterproofing prevents such problems, and protects the health of both the structures and the users.

What methods should be applied to ensure waterproofing on walls?

First, the surfaces of walls are cleaned. Any rough spots, if any, on the wall surface are eliminated. If external facade is to be waterproofed, the waterproofing material is applied to the outer part of the wall. With these applications, you can easily waterproof the walls of your home. We recommend you to review our Yurtbay Construction Chemicals product catalog to find the suitable waterproofing product.

How to solve water leakage in floor tiles?

This problem is caused by installing ceramic coatings without waterproofing, especially in wet areas. In areas referred to as wet floors, such as bathrooms and kitchens, it is essential to apply waterproofing before installing ceramic coatings. You can prevent future leaks by applying waterproofing with products of Yurtbay Aqualatex group before installing ceramics to the floors.

Which waterproofing material is most suitable for bathroom applications?

Choosing the correct material for waterproofing in bathrooms not only prevents water leakage but also prevents the formation of mold and fungus, which may lead to health problems and damage the structure in the bathroom. Insulation made with the correct bathroom waterproofing materials extends the life of your bathroom and provides a healthy environment. You can achieve an effective and durable waterproofing in your bathroom with AQUALATEX PLUS, a member of the Yurtbay Aqualatex product family.

FREQUENTLY ASKED QUESTIONS

WATERPROOFING MATERIALS

Is it possible to use the same waterproofing product in both indoor and outdoor areas?

Yes, there is no need to purchase different types of waterproofing solutions. Our high-quality waterproofing products, such as AQUALATEX PLUS, can be used for waterproofing in both indoor and outdoor areas.

What are the main areas that require waterproofing?

Waterproofing is required in areas from which water can enter our buildings. These areas include walls, foundations, and ground-mounted floors that are in contact with the ground, external walls, balconies, and terraces, where the water may accumulate outside building or which may be subject to floods, and wet areas such as bathrooms, sinks, and toilets. Another application area for waterproofing is structures such as water reservoirs, artificial ponds, and pools, where we want to keep water inside. A building needs waterproofing to protect various areas from damage due to water. These are as follows:

- Terraces and roofs
- Bathrooms and kitchens
- Balconies and decks
- Basements and foundations
- Exterior walls and facades

What is the importance of waterproofing on terraces, and how is it performed?

To perform waterproofing in areas such as terraces is a very important issue because terraces can hold rainwater and snow water, and are easily exposed to other natural events, making it crucial to carry out a sensitive manufacturing process. If there is a water leak on your terrace, your apartment or house will likely become damp. Especially buildings that take water inside can easily become damp, and this dampness can spread throughout the entire building. So how can water leaks be prevented on the terrace?

The only way to prevent water leaks is to apply a waterproofing material. Today, when it comes to waterproofing, the first products that come to mind are liquid waterproofing products. Liquid waterproofing materials easily prevent water leaks spreading into the building from terraces, as they can be easily applied to any surface and are highly durable products. If there is a water leak in your apartment or on the terrace, you can benefit from liquid waterproofing materials.

Liquid waterproofing products can easily be applied to all surfaces, thus you can easily perform waterproofing in all seasons. On rainy and non-humid days, the liquid waterproofing products you apply to areas where water leaks dry in a short time, effectively performing waterproofing and completely preventing water leaks.

Terrace waterproofing products include bitumen-based liquid waterproofing products, namely YURTBAY AQUA BITUM 1K and AQUA BITUM 2K, elastomeric resin-based liquid waterproofing product, namely YURTBAY ISOQUA, and cement-based two-component liquid waterproofing product, namely [AQUALATEX PLUS; you can opt for any of these products after a surface diagnosis. We recommend you to review our Yurtbay Construction Chemicals product catalog to find the suitable waterproofing product.

THERMAL INSULATION SYSTEMS





YURTBAY INSULATION PLASTERING MORTAR

THERMAL INSULATION BOARD PLASTERING MORTAR

YURTBAY THERMAL INSULATION BOARD PLASTERING MORTAR is a cement-based, polymer and polypropylene fiber-added thermal insulation board plastering mortar.



AREAS OF APPLICATION

It is used for plastering EPS [Expanded Polystyrene], XPS [Extruded Polystyrene], and rock wool boards used in thermal insulation in applications made on external surfaces of buildings, such as autoclaved aerated concrete [AAC], brick, solid concrete, and briquette.

APPLICATION INFORMATION (23 °C AND 50% R.H.)

Product type	: Powder
Product color	: Gray
Mixing ratio	: 5.5 – 6.5 liters of water for a 25 kg mixture
Pot life	: Max. 2 hours
Application temperature	: Between +5 °C and +35 °C
Time required for complete hardening	: 28 Days

PRODUCT PERFORMANCE CHARACTERISTICS

Grain size	: 1 mm ≤ %1
Flexural strength	: ≥ 2 N/mm
Compressive strength	: ≥ 6 N/mm
Strength of adhesion to thermal insulation board	: ≥ 0,08 N/mm
Capillary water absorption coefficient of hardened plaster	: ≤ 0,5 gr
Water vapor permeability	: μ ≤ 15

*These values are obtained as a result of laboratory tests in compliance with standards. Values may vary in different application environments.

SURFACE PREPARATION

The surfaces to which Yurtbay Insulation Plastering Mortar will be applied must be clean and solid. Dust, grease, dirt, and materials that prevent adhesion must be cleaned from the surface.

PREPARATION OF THE MIXTURE

5.5 – 6.5 liters of clean water is poured into a clean, round-shaped container, and 25 kg of powder product is gradually added and mixed until the mixture becomes homogeneous and contains no lumps. A low-speed mixer should be used for mixing. Fresh mortar should be rest for 5 minutes and remixed before application.

APPLICATION

YURTBAY INSULATION PLASTER is properly applied with a steel trowel over the heat insulation boards that are adhered with YURTBAY HEAT INSULATION BOARD PLASTERING MORTAR. The first layer of plaster is combed with a notched trowel with a tooth thickness of 4*4 mm to achieve a homogeneous thickness. The plaster is embedded into the reinforcement mesh with the help of a steel trowel, by pressing lightly from top to bottom before the plastering mortar dries. Reinforcement meshes should be applied by overlapping 10 cm at the joints. The second layer of plaster should be applied immediately after the first layer has absorbed water, but before it completely dries. The prepared mortar should be used within 2 hours.

APPLICATION CONDITIONS

- The temperature of the ambient air and the application surface should be between 5 °C and 35°C.
- It should not be applied on surfaces that have frozen, are melting, or are prone to a risk of freezing.
- The mixture should not be applied when the surface is extremely hot, or when the weather is very sunny, or extremely windy.

WARNINGS AND RECOMMENDATIONS

- The floors and plasters on the surfaces to be insulated should be completely dry.
- If the material starts to crust during the open holding time, it should be remixed before application.
- Foreign materials should never be added.

CONSUMPTION

Consumption amount per 1 m² is 4 – 5 kg.

Note: The given consumption amounts are approximate values and may vary depending on the smoothness of the application surface and the thickness of the application.

SHELF LIFE

It can be used within 12 months from the date of production if stored in dry, moisture-free environments and in its original packaging. The package should be tightly closed when not in use.

BAG	PALLET		
BAG WEIGHT / kg	QUANTITY / BAG	GROSS WEIGHT/kg	DIMENSIONS/cm
25	64	1600	110x110x100

*The specified weights do not include the pallet.





YURT BAY INSULATION ADHESIVE MORTAR

HEAT INSULATION BOARD ADHESIVE MORTAR

YURT BAY HEAT INSULATION BOARD ADHESIVE MORTAR is a cement-based, polymer-added adhesive mortar used for thermal insulation boards.



AREAS OF APPLICATION

It is used for bonding boards such as EPS [Expanded Polystyrene], XPS [Extruded Polystyrene], and rock wool to surfaces in the interiors and exteriors of buildings.

APPLICATION INFORMATION [23 °C AND 50% R.H.]

Product type : Powder
Product color : Gray
Mixing ratio : 5.5 - 6.5 liters of water for a 25 kg mixture

Pot life : Max. 2 hours
Application temperature : Between +5 °C and +35 °C
Time required for complete hardening : 28 Days

PRODUCT PERFORMANCE CHARACTERISTICS

Bulk density of fresh mortar : $\geq 1000 \text{ kg/m}^3$
Flexural strength : $\geq 2 \text{ N/mm}^2$
Compressive strength : $\geq 6 \text{ N/mm}^2$
Strength of adhesion to thermal insulation board : $\geq 0,08 \text{ N/mm}^2$
Water absorption after 30 minutes : $\leq 5 \text{ g}$
Water absorption after 240 minutes : $\leq 10 \text{ g}$
Strength of adhesion to the substrate : $\geq 0,5 \text{ N/mm}^2$

*These values are obtained as a result of laboratory tests in compliance with standards. Values may vary in different application environments.

SURFACE PREPARATION

The surfaces to which Yurtbay Insulation Adhesive Mortar will be applied must be clean and solid. Dust, grease, dirt, and materials that prevent adhesion must be cleaned from the surface. Necessary repairs on surfaces must be made at least 24 hours before the application.

PREPARATION OF THE MIXTURE

5.5 - 6.5 liters of clean water is poured into a clean, round-shaped container, and 25 kg of powder product is gradually added and mixed until the mixture becomes homogeneous and contains no lumps. A low-speed mixer should be used for mixing. Fresh mortar should be rest for 5 minutes and remixed before application.

APPLICATION

Once the ground of the application surface is prepared, thermal insulation board adhesive mortar is placed, with the help of a trowel, at the edges of the thermal insulation board to create a frame and in the center in a dot form. When installing the boards, they should be pressed towards the surface until they are level. Care should be taken to apply the mortar so that it does not overflow from the board. If the surface to be applied is very smooth, the combing method can also be applied. The prepared mortar should be used within 2 hours.

APPLICATION CONDITIONS

- The temperature of the ambient air and the application surface should be between 5 °C and 30°C.
- It should not be applied on surfaces that have frozen, are melting, or are prone to a risk of freezing.
- The mixture should not be applied when the surface is extremely hot, or when the weather is very sunny, or extremely windy.

WARNINGS AND RECOMMENDATIONS

- The floors and plasters on the surfaces to be insulated should be completely dry.
- If the material starts to crust during the open holding time, it should be remixed before application.
- Foreign materials should never be added.

CONSUMPTION

Consumption amount per 1 m² is 4 - 5 kg.

Note: The given consumption amounts are approximate values and may vary depending on the smoothness of the application surface and the thickness of the application.

SHELF LIFE

It can be used within 12 months from the date of production if stored in dry, moisture-free environments and in its original packaging. The package should be tightly closed when not in use.

BAG		PALLET	
BAG WEIGHT / kg	QUANTITY / BAG	GROSS WEIGHT/kg	DIMENSIONS/cm
25	64	1600	110x110x100

*The specified weights do not include the pallet.





YURT BAY DECO FINE

CEMENT-BASED FINE DECORATIVE PLASTER WITH HYDROPHOBIC ADDITIVE

YURT BAY DECO DECORATIVE FINE TEXTURED PLASTER is a white cement-based, polymer-modified final decorative coating material with water-repellent properties.



AREAS OF APPLICATION

It is used as a decorative coating on interior and exterior surfaces of exterior thermal insulation systems where durability and decorative appearance are desired.

EXAMPLES OF APPLICATION

Indoor and outdoor : Cement-based plaster,
: Thermal insulation board
: Concrete surfaces

APPLICATION INFORMATION (23 °C AND 50% R.H.)

Product type : Powder
Product color : White
Mixing ratio : 5 - 6 liters of water for a 25 kg mixture

Period in which the mortar should be used : Max. 2 hours

Application temperature : Between +5 °C and +35 °C

Time required for usability : Min. 24 hours

Total hardening time : 28 Days

PRODUCT PERFORMANCE CHARACTERISTICS

Grain size : Class S4

Dry film thickness : Class E5

Water vapor transmission rate : Class V2

Water transmission rate : Class W1

*These values are obtained as a result of laboratory tests in compliance with standards. Values may vary in different application environments.

SURFACE PREPARATION

The load-bearing capacity and strength of the ground are checked, and dust, dirt, and paint residues that prevent adhesion should be removed from the surface.

The application area should be moistened if the weather is extremely hot or the surfaces is very dry. Surfaces must be primed before decorative plaster application.

PREPARATION OF THE MIXTURE

5 - 6 liters of clean water is poured into a clean, round-shaped container, and 25 kg of powder product is gradually added and mixed until the mixture becomes homogeneous and contains no lumps. A low-speed mixer should be used for mixing. Fresh mortar should be rest for 5 minutes and remixed before application.

APPLICATION

The product should be spread to the surface with an even thickness by using a steel trowel. The application thickness should be adjusted according to the largest grain size in the plaster. To achieve the desired pattern, the DECO DECORATIVE PLASTER should be smoothed by moving the trowel over the pattern stones. The smoothing process should be performed before the surface completely dries. When applying over a large area, always wet product should be applied on wet surface to avoid color differences.

APPLICATION CONDITIONS

·The temperature of the ambient air and the application surface should be between 5 °C and 35°C.

·It should not be applied on surfaces that have frozen, are melting, or are prone to a risk of freezing.

·The mixture should not be applied when the surface is extremely hot, or when the weather is very sunny, or extremely windy.

WARNINGS AND RECOMMENDATIONS

·The surface and environment must be at the appropriate temperature and protected against precipitation during and within 24 hours following the application.

·Foreign materials should never be added.

·Before working in a large area, all necessary equipment and tools must be prepared.

CONSUMPTION

The consumption amount is 2 - 3 kg/m² depending on the surface roughness

Note: The given consumption amounts are approximate values and may vary depending on the smoothness of the application surface and the thickness of the application.

SHELF LIFE

It can be used within 12 months from the date of production if stored in dry, moisture-free environments and in its original packaging. The package should be tightly closed when not in use.

BAG		PALLET	
BAG WEIGHT / kg	QUANTITY / BAG	GROSS WEIGHT/kg	DIMENSIONS/cm
25	64	1600	110x110x100

*The specified weights do not include the pallet.





YURT BAY DECO COARSE

CEMENT-BASED COARSE DECORATIVE PLASTER WITH HYDROPHOBIC ADDITIVE

YURT BAY DECO DECORATIVE COARSE TEXTURED PLASTER is a white cement-based, polymer-modified final decorative coating material with water-repellent properties.



AREAS OF APPLICATION

It is used as a decorative coating on interior and exterior surfaces of exterior thermal insulation systems where durability and decorative appearance are desired.

EXAMPLES OF APPLICATION

Indoor and outdoor : Cement-based plaster
: Thermal insulation board
: Concrete surfaces

APPLICATION INFORMATION [23 °C AND 50% R.H.]

Product type : Powder
Product color : White
Mixing ratio : 5 - 6 liters of water for a 25 kg mixture

Period in which the mortar should be used : Max. 2 hours

Application temperature : Between +5 °C and +35 °C
Total hardening time : Min. 24 hours
Total hardening time : 28 Days

PRODUCT PERFORMANCE CHARACTERISTICS

Grain size : Class S4
Dry film thickness : Class E5
Water vapor transmission rate : Class V2
Water transmission rate : Class W1

*These values are obtained as a result of laboratory tests in compliance with standards. Values may vary in different application environments.

SURFACE PREPARATION

The load-bearing capacity and strength of the ground are checked, and dust, dirt, and paint residues that prevent adhesion should be removed from the surface. The application area should be moistened if the weather is extremely hot or the surfaces is very dry. Surfaces must be primed before decorative plaster application.

PREPARATION OF THE MIXTURE

5 - 6 liters of clean water is poured into a clean, round-shaped container, and 25 kg of powder product is gradually added and mixed until the mixture becomes homogeneous and contains no lumps. A low-speed mixer should be used for mixing. Fresh mortar should be rest for 5 minutes and remixed before application.

APPLICATION

The product should be spread to the surface with an even thickness by using a steel trowel. The application thickness should be adjusted according to the largest grain size in the plaster. To achieve the desired pattern, the DECO DECORATIVE PLASTER should be smoothed by moving the trowel over the pattern stones. The smoothing process should be performed before the surface completely dries. When applying over a large area, always wet product should be applied on wet surface to avoid color differences.

APPLICATION CONDITIONS

•The temperature of the ambient air and the application surface should be between 5 °C and 35°C.
•It should not be applied on surfaces that have frozen, are melting, or are prone to a risk of freezing.
•The mixture should not be applied when the surface is extremely hot, or when the weather is very sunny, or extremely windy.

WARNINGS AND RECOMMENDATIONS

•The surface and environment must be at the appropriate temperature and protected against precipitation during and within 24 hours following the application.
•Foreign materials should never be added.
•Before working in a large area, all necessary equipment and tools must be prepared.

CONSUMPTION

The consumption amount is 2 - 3 kg/m² depending on the surface roughness

Note: The given consumption amounts are approximate values and may vary depending on the smoothness of the application surface and the thickness of the application.

SHELF LIFE

It can be used within 12 months from the date of production if stored in dry, moisture-free environments and in its original packaging. The package should be tightly closed when not in use.

BAG		PALLET	
BAG WEIGHT / kg	QUANTITY / BAG	GROSS WEIGHT/kg	DIMENSIONS/cm
25	64	1600	110x110x100

*The specified weights do not include the pallet.





YURT BAY DECO LINE

CEMENT-BASED LINE-TEXTURED DECORATIVE PLASTER WITH HYDROPHOBIC ADDITIVE

YURT BAY DECO DECORATIVE LINE-TEXTURED PLASTER is a white cement-based, polymer-modified final decorative coating material with water-repellent properties.



AREAS OF APPLICATION

It is used as a decorative coating on interior and exterior surfaces of exterior thermal insulation systems where durability and decorative appearance are desired.

EXAMPLES OF APPLICATION

Indoor and outdoor : Cement-based plaster
: Thermal insulation board
: Concrete surfaces

APPLICATION INFORMATION [23 °C AND 50% R.H.]

Product type : Powder
Product color : White
Mixing ratio : 5 - 6 liters of water for a 25 kg mixture

Period in which the mortar should be used : Max. 2 hours

Application temperature : Between +5 °C and +35 °C
Total hardening time : Min. 24 hours
Total hardening time : 28 Days

PRODUCT PERFORMANCE CHARACTERISTICS

Grain size : Class S4
Dry film thickness : Class E5
Water vapor transmission rate : Class V2
Water transmission rate : Class W1

*These values are obtained as a result of laboratory tests in compliance with standards. Values may vary in different application environments.

SURFACE PREPARATION

The load-bearing capacity and strength of the ground are checked, and dust, dirt, and paint residues that prevent adhesion should be removed from the surface. The application area should be moistened if the weather is extremely hot or the surfaces is very dry. Surfaces must be primed before decorative plaster application.

PREPARATION OF THE MIXTURE

5.5 - 6 liters of clean water is poured into a clean, round-shaped container, and 25 kg of powder product is gradually added and mixed until the mixture becomes homogeneous and contains no lumps. A low-speed mixer should be used for mixing. Fresh mortar should be rest for 5 minutes and remixed before application.

APPLICATION

The product should be spread to the surface with an even thickness by using a steel trowel. The application thickness should be adjusted according to the largest grain size in the plaster. To achieve the desired pattern, the DECO DECORATIVE PLASTER should be smoothed by moving the trowel over the pattern stones. The smoothing process should be performed before the surface completely dries. When applying over a large area, always wet product should be applied on wet surface to avoid color differences.

APPLICATION CONDITIONS

•The temperature of the ambient air and the application surface should be between 5 °C and 35°C.

•It should not be applied on surfaces that have frozen, are melting, or are prone to a risk of freezing.

•The mixture should not be applied when the surface is extremely hot, or when the weather is very sunny, or extremely windy.

WARNINGS AND RECOMMENDATIONS

•The surface and environment must be at the appropriate temperature and protected against precipitation during and within 24 hours following the application.

•Foreign materials should never be added.

•Before working in a large area, all necessary equipment and tools must be prepared.

CONSUMPTION

The consumption amount is 2 - 3 kg/m² depending on the surface roughness

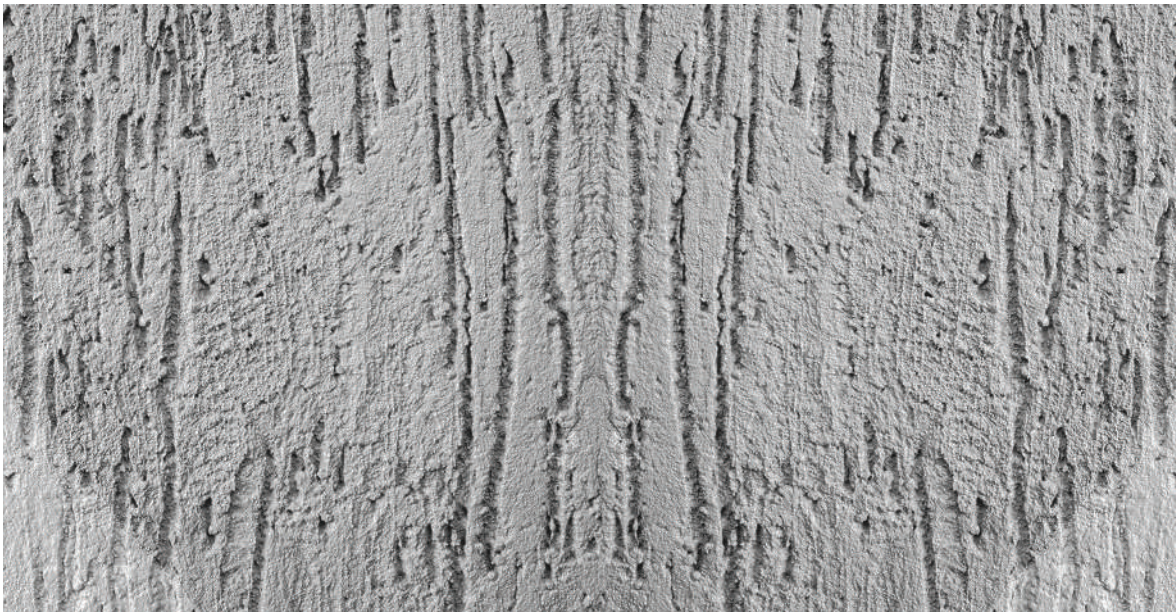
Note: The given consumption amounts are approximate values and may vary depending on the smoothness of the application surface and the thickness of the application.

SHELF LIFE

It can be used within 12 months from the date of production if stored in dry, moisture-free environments and in its original packaging. The package should be tightly closed when not in use.

BAG	PALLET		
BAG WEIGHT / kg	QUANTITY / BAG	GROSS WEIGHT/kg	DIMENSIONS/cm
25	64	1600	110x110x100

*The specified weights do not include the pallet.





YURTBAY INSULATION PRIMER

SILICONE-ADDED, WATER-BASED INSULATION PRIMER

It is an acrylic emulsion-based highly penetrable, silicone-added primer that contain covering pigment and can be used under all interior and exterior coating materials.

AREAS OF APPLICATION

It is used as a decorative coating on interior and exterior surfaces of exterior thermal insulation systems where durability and decorative appearance are desired.

EXAMPLES OF APPLICATION

It is applied on cement-based plaster on interior and exterior walls.

APPLICATION INFORMATION [23 °C AND 50% R.H.]

Appearance;	: White liquid
Structure;	: Acrylic emulsion based
Thinner;	: Water
Density;	: Approximately 1.51 g/cm ³
Application temperature;	: [+5°C]-[+35°C]
Drying Time;	: It takes 6 hours to dry for the application of the top coating material. [Lower temperatures and higher relative humidity extend the drying time.]

SURFACE PREPARATION

The surfaces to which Yurtbay Insulation Primer will be applied must be clean and solid. The residues that could prevent adhesion must be removed from the surface.

APPLICATION

Yurtbay Installation Primer can be diluted with clean water at a ratio of 1/1 by weight if necessary before application. Yurtbay Installation Primer is directly applied with a brush or roller. It should be mixed before application. It is important that the surface and air temperature during the application is between 5°C and 30°C. The product should not be applied on excessively windy or directly sunlit hot surfaces. It is recommended to be applied in a single layer 1 day before insulation applications.

APPLICATION CONDITIONS

Yurtbay Insulation Primer should be mixed with water for 2 - 3 minutes using a low-speed mixer until a homogeneous mixture is obtained.

WARNINGS AND RECOMMENDATIONS

Since it is acrylic-based, do not inhale the dust, and avoid contact with skin and eyes. The consumption values are intended to provide general information and may vary depending on application conditions and surface characteristics. It should be protected from freezing. It must be stored at temperatures between 5°C - 23°C without being exposed to sunlight.

CONSUMPTION

The average consumption is 0.150 lt/m² for a single layer depending on the roughness and absorpency of the surface. Note: The given consumption amounts are approximate values and may vary depending on the smoothness of the application surface and the thickness of the application.

SHELF LIFE

Shelf life is 12 months in closed packaging.

BUCKET		BUCKET	
BUCKET WEIGHT / kg	QUANTITY / BUCKET	GROSS WEIGHT/lt	DIMENSIONS/cm
2,5	72	200	110x110x45
15	24	380	110x110x75

* The specified weight amounts exclude the pallet.



FREQUENTLY ASKED QUESTIONS

THERMAL INSULATION

What is thermal insulation and why is it necessary?

Thermal insulation is a process that provides energy savings by protecting the interior spaces of a building from external factors. This process aims to reduce heat transfer and maintain the desired temperature level in indoor spaces. Thermal insulation has an important role in keeping indoor spaces warm in cold climates and cool in hot climates.

Heat intrinsically tends to disperse from high temperature areas to low temperature areas. Therefore, a barrier must be created to prevent the flow of cold or hot air from outside so that the temperature in indoor spaces are maintained at the desired level. Thermal insulation providing this barrier and limits the transfer of heat between the external environment and the internal environment.

- What benefits does thermal insulation provide? [energy savings, comfort, environmentally friendly, etc.]
- Thermal insulation applied to buildings can ensure fuel savings of up to 50%.
- Natural gas consumption significantly decreases, resulting in substantial savings.
- It balances room temperatures, thus increases the comfort, in the building.
- It prevents sweating [condensation] that leads to the formation of mold, black stains, and fungus within apartments, thus extending the lifespan of the building.
- It is an environmentally-friendly solution reducing environmental pollution.

In which areas can thermal insulation be applied?

Thermal insulation can be applied in many parts of buildings. It is most commonly applied to exterior walls. Roof insulation also provides significant energy savings by preventing heat from escaping through the roof. Moreover, insulation applied to structural elements such as windows, doors, and walls can help minimize heat loss.

To maximize energy efficiency in buildings, insulation must be applied in all these areas. Especially, exterior walls are considered the most effective area for insulation applications in buildings as they cause the greatest heat loss.

What types of materials are used for thermal insulation?

The most commonly used materials in thermal insulation are thermal insulation boards. These boards are generally made from EPS [expanded polystyrene], XPS [extruded polystyrene], and rock wool.

FREQUENTLY ASKED QUESTIONS

THERMAL INSULATION

How many years does thermal insulation last? What is its lifespan?

The lifespan of thermal insulation depends on the type of the material used.

- Cellulose-based insulations generally lasts 20-30 years; however, deterioration may begin after 15 years on average.
- Mineral wool [rock wool] can provide durability from 30 to 100 years.
- Rigid foam boards have a lifespan of approximately 100 years.

When applied correctly and maintained regularly, thermal insulation can maintain its performance for decades.

Can thermal insulation be applied subsequently or to existing buildings?

Insulation can also be applied to existing painted surfaces or aerated concrete/briquette walls.

- Insulation can also be applied to existing painted surfaces or aerated concrete/briquette walls.
- There will be continuous heat loss from the building walls.
- The temperature in indoor spaces is unstable when there is a cold or hot air transition.
- This results in an increase in natural gas and electricity bills.

Is insulation the same as thermal insulation?

No, it is not.

Thermal insulation is a method used to protect a building from the effects of external weather conditions. Insulation is one of the methods for applying this technique and refers to the process of installing insulation materials to the exterior surface of the building.

PRIMERS AND ADDITIVES





YURTBAI ACRYLIC-BASED PRIMER

ACRYLIC-BASED PRIMER

It is a polymer emulsion-based, solvent-free ready-to-use primer that balances the water absorbency of concrete and mortar surfaces before application.



AREAS OF APPLICATION

It is used to increase the adhesion strength of cement-based materials by reducing the absorbency of surfaces such as plaster, concrete, mortar, screed, and wood. Ceramic coating is applied before various applications such as leveling screed, insulation, and paint to prevent dusting and increase efficiency.

APPLICATION INFORMATION [23 °C AND 50% R.H.]

Product type/color : Green Liquid
Application temperature : between 5 °C and 35 °C
Drying time : 45-60 min.
Pot life : 20 minutes

SURFACE PREPARATION

The surfaces to which Yurtbay Acrylic Based Primer will be applied must be clean and solid. The residues that could prevent adhesion must be removed from the surface. If necessary, the surface should be leveled and cracks should be repaired with Yurtbay Repair Mortar [thick/thin].

APPLICATION

Yurtbay Primer should be shaken before use, and it should be applied evenly to the ground with a brush or roller.

APPLICATION CONDITIONS

- It should be applied 2 layers on highly absorbent surfaces such as plaster, screed, and concrete.
- The drying time is 45 to 60 minutes, and no application should be made on it until it completely dries.
- During application, the surface and ambient temperature should be between 5°C and 35°C.

WARNINGS AND RECOMMENDATIONS

- Since it is an emulsion polymer [acrylic] based product, avoid contact with skin and eyes.
- The specified consumption values are intended to provide general information and may vary depending on application conditions and surface characteristics.
- It should be protected from freezing. It must be stored at temperatures between 5°C - 23°C without being exposed to sunlight.

CONSUMPTION

150 g/ m²

Note: The given consumption amounts are approximate values and may vary depending on the smoothness of the application surface and the thickness of the application.

SHELF LIFE

Shelf life is 12 months in closed packaging.

DRUM		PALLET	
BAG WEIGHT / kg	QUANTITY / BAG	GROSS WEIGHT/kg	DIMENSIONS/cm
5	40	200	110x110x40

* The specified weight amounts exclude the pallet.





YURTBAY FILLER PRIMER

SURFACE ROUGHENING PRIMER

It is an emulsion polymer-based surface roughening primer used for installing ceramic coating over an older ceramic coating.



AREAS OF APPLICATION

It is used as a primer on smooth and shiny surfaces like ceramic, granite, marble, and absorbent surfaces like plaster, concrete, and screed. It is not suitable for surfaces remaining in water.

APPLICATION INFORMATION [23 °C AND 50% R.H.]

Product type/color : Liquid/light blue
Pot life : Max. 2 hours
Application temperature : between 5 °C and 35 °C
Pot life : Max. 2 hours
Drying time : 45-60 dk.
Waiting time after application : 48 saat

*These values are obtained as a result of laboratory tests in compliance with standards. Values may vary in different application environments.

SURFACE PREPARATION

The surfaces to which Yurtbay Filler Primer will be applied must be clean and solid. The residues that could prevent adhesion must be removed from the surface. If necessary, the surface should be leveled and cracks should be repaired with Yurtbay Repair Mortar [thick/thin].

APPLICATION

Yurtbay Filler Primer should be applied with a brush or roller after being thoroughly mixed. Two layers should be applied on surfaces with high absorbency.

APPLICATION CONDITIONS

- During application, the product should be kept homogeneous by mixing at certain intervals, if necessary.
- During application, the surface and ambient temperature should be between 5°C and 35°C.
- The drying time is 45 to 60 minutes, and no application should be made on it until it completely dries.
- No water should be added to the product for dilution purposes.

WARNINGS AND RECOMMENDATIONS

Hands and application tools should be washed with plenty of water after application. Care should be taken to prevent the material from being exposed to direct sunlight in hot weather. It is not suitable for surfaces that are continuously exposed to water.

CONSUMPTION

100-200 gr/m² [for a single coat]

Note: The given consumption amounts are approximate values and may vary depending on the smoothness of the application surface and the thickness of the application.

SHELF LIFE

12 months in closed packaging in a dry environment.

BUCKET		PALLET	
BUCKET WEIGHT / kg	QUANTITY / BUCKET	GROSS WEIGHT/lt	DIMENSIONS/cm
1	1 box contains 12 pieces	192	110x110x65
3	50	150	110x110x75
5	40	200	110x110x50
20	16	320	110x110x110

*The specified weights do not include the pallet.





YURT BAY EXPOSED CONCRETE PRIMER

EXPOSED CONCRETE PRIMER

It is a polymer emulsion-based, solvent-free, exposed concrete primer that has filler features and is used as a strength enhancer in the application of cement and gypsum-based mortars on such surfaces such as walls and ceilings.



AREAS OF APPLICATION

It is used as a primer on high water-absorbing exposed concrete surfaces, on walls and ceilings, and under cement and gypsum-based plaster to increase adhesion and workability time, and to prevent water absorption.

EXAMPLES OF APPLICATION

- In Indoor and Outdoor Areas.
- On Horizontal and Vertical Surfaces.

APPLICATION INFORMATION [23 °C AND 50% R.H.]

Product type/color	: Liquid/Green
Application temperature	: between 5 °C and 35 °C
Drying time	: Max. 60 min
Waiting time after application	: min. 24 hours

*Bu değerler standartlara uygun laboratuvar deneyleri sonucunda elde edilmiştir. Farklı uygulama ortamlarında değerler değişebilir.

APPLICATION

4-6 liters of water is added to a 12 kg bucket of exposed concrete primer and thoroughly mixed; then the mixture is applied with a brush or roller. It is recommended to prepare the mixture with a low-speed mixer [less than 500 rpm]. The product in the bucket should be mixed at certain intervals to maintain homogeneity. Care should be taken to prevent it from settling.

SURFACE PREPARATION

- The surface must be dry, clean, solid and free from dust; oil, dirt, and materials that prevent adhesion must be removed from the surface, and residues of mortar, cement, etc., must be scraped off the surface
- The defects on the surface should be corrected and cracks should be repaired with Yurtbay Repair Mortar [thin/thick].

APPLICATION CONDITIONS

- The temperature of the ambient air and the application surface should be between 5 °C and 35°C.
- It should not be applied on surfaces that have frozen, are melting, or are prone to a risk of freezing.
- The mixture should not be applied when the weather is very sunny, or extremely windy.

WARNINGS AND RECOMMENDATIONS

The product should not be applied on unsound surfaces. The soundness and load-bearing capacity of old surfaces should be checked before the application. During and after the application, the surface should be protected from air currents and contact with water should be avoided. During application, the product should be kept homogeneous by mixing at certain intervals, if necessary.

CONSUMPTION

150 - 250 gr/m² [for single layer]

Note: The given consumption amounts are approximate values and may vary depending on the smoothness of the application surface and the thickness of the application.

SHELF LIFE

12 months in closed packaging in a dry environment.

BUCKET		PALLET	
BAG WEIGHT / kg	QUANTITY / BAG	GROSS WEIGHT/kg	DIMENSIONS/cm
12	18	216	110x110x110

* The specified weight amounts exclude the pallet.





YURTBAY LATEX

PERFORMANCE ENHANCER MORTAR ADDITIVE

It is an auxiliary additive that increases adhesion and binding, and provides water impermeability for ceramic adhesives and cement-based mortars [e.g. repair mortars].

AREAS OF APPLICATION

It enhances the flexibility, adhesion, and water impermeability of cement-based mortars, enabling them to be used in repair works.

EXAMPLES OF APPLICATION

It is used for screeds, repair mortars, and plaster mortars.

SURFACE PREPARATION

The surfaces to which Yurtbay Latex will be applied must be clean and solid. The residues that could prevent adhesion must be removed from the surface.

TECHNICAL SPECIFICATIONS

Appearance: white liquid

Density: 1.03±0.03 g/cm³

Application temperature: between 5°C and 35°C

APPLICATION

Yurtbay Latex should be added to clean water and mixed. The mixing ratio is between 1/1 and 1/4. The mortar is obtained by adding water at the specified ratio to the powder material.

APPLICATION CONDITIONS

The sand to be used in the mixture must be clean, and the cement must be fresh and in good condition. Ambient temperature should be between 5°C and 35°C.

WARNINGS AND RECOMMENDATIONS

- Since it is a synthetic rubber-based material, avoid contact with skin and eyes.

- The specified consumption values are intended to provide general information and may vary depending on application conditions and surface characteristics.

- The product must be protected from freezing. It must be stored at temperatures between 5°C - 23°C without being exposed to sunlight.

CONSUMPTION

Consumption varies according to the place and purpose of use.

Note: The given consumption amounts are approximate values and may vary depending on the smoothness of the application surface and the thickness of the application.

SHELF LIFE

Shelf life is 12 months in closed packaging.

DRUM	PALLET		
DRUM WEIGHT / kg	QUANTITY / DRUM	GROSS WEIGHT lt	DIMENSIONS/cm
5	40	200	110x110x40
30	16	480	110x110x90

* The specified weight amounts exclude the pallet.





YURTBAY EXPOSED CONCRETE PRIMER

HIGHLY ADHESIVE, CONCENTRATE, POWDER EXPOSED CONCRETE PRIMER

YURTBAY EXPOSED CONCRETE PRIMER is a cement-based, highly polymer-added exposed concrete primer which contains special additives and fillers, increases adhesion by roughening surfaces such as exposed concrete, smooth walls and ceilings, reduces the water absorption of the concrete used, and is used in the concentrate form.



AREAS OF APPLICATION

YURTBAY EXPOSED CONCRETE PRIMER can be used in horizontal and vertical applications in both indoor and outdoor environments as an adhesion promoter before cement and gypsum-based plaster applications on walls and ceilings with high water absorption exposed concrete surfaces.

APPLICATION SURFACES

It is used on horizontal and vertical surfaces in indoor and outdoor spaces to prepare a smooth surface before plastering on surfaces such as exposed concrete and screed, and as an adhesion promoter exposed concrete primer under cement-based mortars on satin plastered surfaces.

TECHNICAL INFORMATION

Product type	: Powder
Product color	: Green
Chemical Structure	: Cement-based, polymer-modified, exposed concrete primer
Grain Size	: $\leq 800 \mu\text{m}$
Mixing ratio	: 10.5 - 11.5 liters of water for a 20 kg mixture
Pot life	: Max. 6 hours
Application temperature	: between 5°C and 35°C
Consumption	: 250-350 g /m ²

*These values are obtained as a result of laboratory tests in compliance with standards. Values may vary in different application environments.

APPLICATION SURFACES

TS EN 1542 INITIAL ADHESION STRENGTH	$\geq 1.0 \text{ N/mm}^2$
TS ISO 4316 PH DETERMINATION	$7 \leq \text{PH} \leq 9$

*Values are obtained from experiments made under laboratory conditions at 23 \pm 2°C and 50% \pm 50% relative humidity. The values above may vary depending on surface and environmental conditions.

SURFACE PREPARATION

The surfaces to which Yurtbay Exposed Concrete Primer will be applied must be clean and solid. The residues that could prevent adhesion must be removed from the surface. Cracks and defects deeper than 3 mm must be repaired with Yurtbay Repair Mortar at least 24 hours before application. The surface should definitely be moistened before application.

APPLICATION METHODS

The surfaces to which Yurtbay Fix will be applied must be clean and solid. The residues that could prevent adhesion must be removed from the surface. The Exposed Concrete Primer is applied with a brush or roller after being thoroughly mixed. Once the product is mixed, it should be consumed within the pot life. The product in the bucket should be kept homogeneous by mixing at certain intervals, and care should be taken to prevent settling.

APPLICATION CONDITIONS

- The temperature of the ambient air and the application surface should be between 5 and 35°C.
- It should not be applied on surfaces that have frozen, are melting, or are prone to a risk of freezing.
- The product should not be applied in rainy weather, and it should be protected for 12 hours after application.
- The mixture should not be applied when the surface is extremely hot, or when the weather is very sunny, or extremely windy.

APPLICATION RECOMMENDATIONS

- Products whose pot life is expired should be used in applications.
- Water or any other additives should not be added to the prepared mixture in excess of the recommended ratio.
- The solidity of the application surfaces should be checked, and no application should be made on surfaces that are not solid.
- Foreign materials should never be added.

CONSUMPTION

The consumption amount is 0.25-0.35 kg/m².

Note: The given consumption amounts are approximate values and may vary depending on the smoothness of the application surface and the thickness of the application.

SHELF LIFE

It can be used within 12 months from the date of production if stored in dry, moisture-free environments and in its original packaging. The package should be tightly closed when not in use.

BAG	PALLET		
BAG WEIGHT / kg	QUANTITY / BAG	GROSS WEIGHT/kg	DIMENSIONS/cm
20	64	1380	110x110x100

* The specified weight amounts exclude the pallet.



FREQUENTLY ASKED QUESTIONS

PRIMERS AND ADDITIVES

What is a primer and why should we use it?

A primer is a material applied to a surface to ensure that the final coat adheres more strongly.

- For ceramic coatings and similar applications on ceramics, it helps to increase surface adhesion, allowing subsequent layers to adhere firmly to the surface.
- It ensures that the applied product performs as expected.
- It reduces dusting on the surface, creates a film layer between the mortar and the absorbent surface, and prevents rapid absorption of water.

What problems may arise if a primer is not applied?

If a primer is not used on dusty or absorbent surfaces, adhesion performance decreases. This may lead to:

- the early drying of the material applied to the surface;
- the detachment of ceramics from the surface, and
- formation of cracks on plaster applications.

On which surfaces should primer be applied?

In ceramic applications, if the surface is dusty or has high water absorption, various types of primers should be used for roughening the surface in the case of ceramic over ceramic applications, preparing the surface in the case of exposed concrete surfaces and waterproofing after insulation plaster in the case of thermal insulation applications.

We recommend you to review our Yurtbay Construction Chemicals product catalog to choose the appropriate primer.

What is the drying time of the primer, when can we make the subsequent application on it?

The drying time varies depending on the type of the primer, but primers generally dry on the surface between 45 minutes and 1 hour. However, this time may vary depending on the type of the subsequent application.

For the right primer selection and detailed information, we recommend you to review the Technical Information Sheets of the related products in the product catalog of Yurtbay Construction Chemicals.

SURFACE CLEANING AND MAINTENANCE





YURTBAY CLEANER

JOINT CLEANER

It is an organic cleaning material used to remove dirt, lime, and detergent residues that naturally occur over time on ceramics, porcelain ceramics, and joint fillers without eroding the joint fillers.

AREAS OF APPLICATION

It has excellent results on ceramics, porcelain ceramics, and joint fillers. It is not suitable for use on marble, granite, and natural stone. For use on coating materials not mentioned above, it is recommended to conduct a trial in a small area. Thanks to its natural content, it does not erode the joint filler surface.

EXAMPLES OF APPLICATION

It is effective on natural dirt.

APPLICATION INFORMATION (23 °C AND 50% R.H.)

Appearance: transparent liquid

Application temperature: between 5°C and 35°C

SURFACE PREPARATION

The surface must be washed with water before application.

PREPARATION OF THE MIXTURE

Yurtbay Cleaner can be mixed with water at a ratio of 1/1 - 1/4 depending on the number and intensity of the stains.

APPLICATION

Yurtbay Cleaner should be sprayed onto the area to be cleaned, in such a way to cover stains. After waiting for 3 to 5 minutes, the surface should be wiped with a clean cloth or brush. The cleaned surface should finally be washed with plenty of water.

WARNINGS AND RECOMMENDATIONS

- Do not use the product without gloves, and avoid direct contact with skin and eyes.
- It should not contact with reactive metals, bleach [chlorine], ammonia, and bases.
- Contact with metal surfaces during use should be avoided as it may cause discoloration.
- During application, the environment should be well ventilated.
- It should be stored in a cool and dry place.
- It should be protected from freezing. It must be stored at temperatures between 5°C - 23°C without being exposed to sunlight.

CONSUMPTION

Average 20-100m² / lt

[May vary depending on the type and number of stains]

SHELF LIFE

Shelf life is 12 months in closed packaging.

PACKAGING		PALLET	
PACKAGING WEIGHT / lt	PACKAGING / PIECE	GROSS WEIGHT / kg	DIMENSIONS/cm
0,5	1 Box 24 Pieces 288	144	80x110x60

* The specified weight amounts exclude the pallet.





YURTBAY SURFACE PROTECTOR

PROTECTIVE LIQUID FOR CERAMIC AND TILE APPLICATIONS

It is a water-based, long-lasting impregnation product that is suitable for applications of all kinds of natural and synthetic stones, that does not change color, that has high absorption capacity, that is suitable for use in indoor and outdoor areas under any climate conditions, offering high UV resistance and water impermeability.

AREAS OF APPLICATION

It can be safely used on all kinds of natural stone surfaces, building facades, cement-based surfaces, terraces, and balconies.

APPLICATION INFORMATION (23 °C AND 50% R.H.)

Appearance: transparent liquid

Application temperature: between 5°C and 35°C

Drying Time: 4-5 hours

SURFACE PREPARATION

The application surfaces must be clean, dry, and free from previously applied protectors.

PREPARATION OF THE MIXTURE

Yurtbay Surface Protector can be mixed with water in a ratio of 1/1 to 1/10 depending on the type of application surface [ceramic, granite, natural stone, etc.].

APPLICATION

Yurtbay Surface Protector should be applied evenly to the entire surface using a brush, roller, or sponge. The product should not be poured directly onto the surface. Excessive material remaining on the surface after application [if any] should be removed from the surface with a clean cloth before the surface completely dries [within 15 minutes]. In cases where a second layer is required, one should wait at least 45 minutes for the first layer to dry. Horizontal surfaces can be opened to pedestrian traffic at least 6 hours after application.

APPLICATION CONDITIONS

It is recommended to apply two layers on highly absorbent surfaces and for outdoor applications.

WARNINGS AND RECOMMENDATIONS

- Avoid contact with eyes and food during use and storage.
- During application, the environment should be ventilated.

CONSUMPTION

1 liter of Yurtbay Surface Protector can cover an area of 9-10 m² [single layer] depending on the absorbency and roughness of the surface, and the application method. A sample study should be conducted to determine the exact consumption.

SHELF LIFE

Shelf life of the product is 12 months from the production date if stored between 5 °C and 35 °C and protected from direct sunlight.

PACKAGING		PALLET	
PACKAGING WEIGHT / lt	PACKAGING / PIECE	GROSS WEIGHT / kg	DIMENSIONS/cm
1	144	144	110x110x80

* The specified weight amounts exclude the pallet.



FREQUENTLY ASKED QUESTIONS

SURFACE CLEANING AND MAINTENANCE

How should we make initial cleaning of newly laid ceramics?

Cement-based mortar, plaster, or joint residues adhering to ceramic surfaces at newly constructed buildings can be easily cleaned with YURTBAY CLEANER. Since the product contains acid, the relevant area must be thoroughly rinsed with plenty of water after application.

How to clean dirt and stains formed in joints?

YURTBAY CLEANER is suitable for cleaning dirt that accumulates over long-term. Since the product contains acid, it is recommended to tape the joint edges on glossy coatings to prevent overflow. The relevant area must be thoroughly rinsed with plenty of water after the application.

Can acid-based cleaners be used on natural stone surfaces?

Since the Cement Residue Cleaner contains acid, it should only be used on acid-resistant ceramics. Therefore, the product is generally not recommended for natural stone surfaces.

How to make regular maintenance for ceramic and stone coatings for long-lasting use?

It is recommended to regularly clean surfaces with appropriate detergents and to use special cleaners for potential stains.

Can incorrect product usage damage the surface, and how can it be prevented?

Acid-containing cleaners can damage surfaces that are not resistant to acid. Therefore, before selecting a product, the resistance of the surface should be checked, and a small area should be tested before application.

FLOOR PREPARATION





YURT BAY LEVELING SCREED

SELF-SPREADING FLOOR LEVELING SCREED (1-10 mm)

YURT BAY LEVELING SCREED is a cement-based surface leveling screed that spreads easily, increases floor strength, and contains special additives.

AREAS OF APPLICATION

It is used to level and repair concrete and screed floors, whether they are new or worn, to provide a dust-resistant surface in indoor areas that are exposed to pedestrian traffic, to smooth concrete or prefabricated concrete surfaces, and to produce a smooth surface under PVC, laminate flooring, wood, and ceramic coatings.

EXAMPLES OF APPLICATION

Indoor areas:

- Concrete flooring
- Prefabricated concrete

APPLICATION INFORMATION (23 °C AND 50% R.H.)

Product type	: Powder
Product color	: Gray
Mixing ratio	: 5.5 - 6 liters of water for a 25 kg powder mixture
Pot life	: Max. 2 hours
Application temperature	: Between +5 °C and +35 °C
Time required for usability	: Min. 10 hours [for walking on it] : Min. 24 hours [for adhesion] : Min. 48 hours [for full use]

PRODUCT PERFORMANCE CHARACTERISTICS

Flexural Strength	: ≥6 N/mm ²
Compressive Strength	: ≥20 N/mm ²

*These values are obtained as a result of laboratory tests in compliance with standards. Values may vary in different application environments.

SURFACE PREPARATION

The surfaces to which Leveling Secret will be applied must be clean and solid. The residues and dust that could prevent adhesion must be removed from the surface. A primer layer should be applied on extremely dry and dusty surfaces. Highly absorbent, solid, or dusty surfaces should be primed with Yurtbay Acrylic Primer and left to dry for a minimum of 4 hours.

PREPARATION OF THE MIXTURE

5.5 - 6 liters of clean water is poured into a clean, round-shaped container, and 25 kg of powder product is gradually added and mixed until the mixture becomes homogeneous and contains no lumps. A low-speed mixer should be used for mixing.

APPLICATION

The prepared mixture is poured slowly starting from the wall edge and is spread evenly. The product is spread with a suitable trowel until the desired thickness is achieved. A leveling roller should be used to obtain a smooth surface and to prevent air bubbles. During application, a hedgehog roller or spiked shoes should be used to ensure that there are no air bubbles in the product and to facilitate the spreading process.



APPLICATION CONDITIONS

- The temperature of the ambient air and the application surface should be between 5 and 35 °C.
- It should not be applied on surfaces that have frozen, are melting, or are prone to a risk of freezing.
- The mixture should not be applied when the surface is extremely hot, or when the weather is very sunny, or extremely windy.

WARNINGS AND RECOMMENDATIONS

- It should not be used on a surface that is not solid enough to bear itself.
- Foreign materials should never be added. It is not recommended to rewet the material which has started to harden.
- For applications thicker than 8 mm, the second layer should be applied after the first layer has completely dried.
- The amount of material to be used for the work should be determined considering the working time.
- The prepared mortar should be consumed within 20 minutes on average, but this time may vary depending on weather conditions.

CONSUMPTION

Consumption amount for 1 mm thickness is 1.5 - 2 kg/m²

Note: The given consumption amounts are approximate values and may vary depending on the smoothness of the application surface and the thickness of the application.

SHELF LIFE

It can be used within 12 months from the date of production if stored in dry, moisture-free environments and in its original packaging. The package should be tightly closed when not in use.

BAG	PALLET		
BAG WEIGHT / kg	QUANTITY / BAG	GROSS WEIGHT/kg	DIMENSIONS/cm
25	64	1600	110x110x100

*The specified weights do not include the pallet.



YURT BAY SURFACE HARDENER

QUARTZ AGGREGATE-BASED SURFACE HARDENER

It is a cement-based ready-to-use surface hardening material that is specially prepared with quartz aggregate, applied in powder form on fresh concrete surfaces that will be exposed to heavy loads.



AREAS OF APPLICATION

It is used in areas that will be exposed to heavy loads, such as indoor and outdoor environments, industrial floors, hangars, garages, parking lots, warehouses, and loading/unloading areas.

APPLICATION SURFACES

Indoor and Outdoor Floors;
- Fresh concrete surfaces

TECHNICAL INFORMATION

Product type/color : Product type/color
Application temperature : between 5°C and 35°C

CONSUMPTION

4-6 kg/m²

Note: The given consumption amounts are approximate values and may vary depending on the smoothness of the application surface and the thickness of the application.

PERFORMANCE INFORMATION

TS EN 13892 - 2 Compressive Strength ≥ 50 N/mm²
TS EN 13892- 5 Abrasion Resistance ≤ 3.0 cm³ / 50 cm²

*Values are obtained from experiments made under laboratory conditions at 23 ± 2°C and 50% ± 50% relative humidity. The values above may vary depending on surface and environmental conditions.

APPLICATION PROCEDURES

Surface Preparation:

- It must be ensured that the surface is solid, dense, and properly leveled before application.
- The concrete used should have the same strength on all application surfaces, and the bearing concrete of the application area should be at least C25 class.
- It is not recommended to use surface hardener for concrete applications that have air entrained in them.

APPLICATION METHODS

After the surface finishing process on freshly poured concrete, the surface should be checked by hand to determine if it is ready for the surface hardener application, and application should proceed if the surface is ready. The approximately 2/3 of the relevant product should be spread homogeneously over the surface, and after the spreading process, it should be waited for the surface hardener product to moisten. The material should be integrated with the concrete by rubbing in the surface with a low-speed, helicopter trowel machine [mechanical trowel]. The remaining 1/3 of the material should also be rubbed in the surface in the same way, and the surface should be smoothed.

TÜKETİM

4-6 kg/m²

Note: The given consumption amounts are approximate values and may vary depending on the smoothness of the application surface and the thickness of the application.

SHELF LIFE

It can be used within 12 months from the date of production if stored in dry, moisture-free environments and in its original packaging. The package should be tightly closed when not in use.

APPLICATION RECOMMENDATIONS

- Care should be taken to prevent the material from being exposed to direct sunlight in hot weather.
- The product should not be applied on excessively windy or directly sunlit hot surfaces; if the product has to be applied in these environments, the environment and surface should be prepared before starting the application.
- The product should not be applied when it is rainy, and the surface should be protected from rain for 24 hours after application.

BAG		PALLET	
BAG WEIGHT / kg	QUANTITY / BAG	GROSS WEIGHT/kg	DIMENSIONS/cm
25	64	1600	110x110x100

*The specified weights do not include the pallet.



FREQUENTLY ASKED QUESTIONS

FLOOR PREPARATION

Why is floor preparation important?

If the floor screed is not smooth, both mechanical and aesthetic problems may arise. Problems such as noise, cracking of coatings, or separation from the surface may occur. To prevent such incidents, preliminary floor preparation should definitely be attached importance.

Coating processes [whether floor coating or waterproofing] are applied not once, but in layers. The preliminary preparation may vary depending on the condition of the surface:

- On absorbent surfaces, it is recommended to use Yurtbay Acrylic Primer to reduce the absorbency of the surface.
- On damaged, broken, or hollowed surfaces, Yurtbay Repair Mortar products should be used to correct the surface.

How should the floor be cleaned and prepared before coating?

Before starting to apply the screed, the dust and dirt on the surface should be cleaned by using brushes, brooms, etc. Then, a suitable floor should be prepared for application by priming the surface with Yurtbay Acrylic Primer to reduce the absorbency of the surface and prevent dusting.

Can the coating be applied on oily, dusty, or loose floors?

No, it is not recommended to apply coating on such floors.

Oil, dust, or loose particles make it difficult for the adhesive or mortar to adhere to the surface and may cause the coating to detach from the surface in the long term. Before application, the floor must be cleaned, dried, and made solid.

What preparation is required for uneven [sloped] floors?

Surface tolerance should be a maximum of 7 mm under a 2-meter template. This tolerance should be reduced to a maximum of 5 mm in areas with heavy pedestrian traffic or for special applications such as in pools. If these values are exceeded, the surface should be corrected with screed or repair plaster.

Can coating be applied on damp or wet floors?

It is not recommended to apply coating directly on damp or wet substrates. The coating material does not adhere well to such floors and can deteriorate in a short time. In summary, the moisture on the floor must be completely removed before application.

In which situations should self-leveling screed be preferred?

These specific self-leveling compounds are preferred especially for floor improvements and renovation works. It is an effective solution for eliminating surface defects such as cracks, dusting, wear, and level differences.

What should be thickness of repair mortars used in floor preparation?

Yurtbay Repair Mortar Fine: 0-15 mm
Yurtbay Repair Mortar Thick: 6-30 mm

NOTES

NOTES

NOTES

**Domestic Sales & Marketing**

Hasanpaşa Mah. Lavanta Sk.
No:2 Kadıköy/İSTANBUL
0 216 327 99 99

Eskişehir Factory

Oklubalı Köyü PK.:22 26670
İnönü/ESKİŞEHİR
0 222 596 61 99

Adana Factory

Hacı Sabancı OSB İsmet Atlı Cad.
No: 11 Sarıçam/ADANA
0 322 342 10 05

**YURT BAY YAPI KİMYASALLARI
REGIONAL SALES DIRECTORS****SOUTHEASTERN ANATOLIA YK SALES DIRECTOR**

+90 531 770 75 55

SOUTHWESTERN ANATOLIA YK SALES DIRECTOR

+90 533 699 86 01

NORTHERN ANATOLIA REGIONAL YK SALES DIRECTOR

+90 532 312 93 38

**YURT BAY SERAMİK
REGIONAL SALES DIRECTORS****WESTERN MARMARA 1st REGIONAL SALES DIRECTOR**

+90 532 611 32 05

WESTERN MARMARA 2nd REGIONAL SALES DIRECTOR

+90 530 327 48 63

EASTERN MARMARA 1st REGIONAL SALES DIRECTOR

+90 533 761 48 18

EASTERN MARMARA 2nd REGIONAL SALES DIRECTOR

+90 531 771 06 40

ÇUKUROVA 1st REGIONAL SALES DIRECTOR

+90 533 701 96 34

ÇUKUROVA 2nd REGIONAL SALES DIRECTOR

+90 539 570 74 89

CENTRAL ANATOLIA REGIONAL SALES DIRECTOR

+90 530 954 60 49

MEDITERRANEAN REGION REGIONAL SALES DIRECTOR

+90 533 167 91 57

AEGEAN REGION REGIONAL SALES DIRECTOR

+90 534 597 10 99

BLACK SEA REGION REGIONAL SALES DIRECTOR

+90 539 570 74 90

SOUTHEASTERN - EASTERN ANATOLIA REGIONAL SALES DIRECTOR

+90 533 259 43 10



www.yyk.com.tr



[/yurtbayyapikimyasallari](#)